

For Research Use Only

# EPS15R Polyclonal antibody, PBS Only

Catalog Number: 21243-1-PBS



## Basic Information

**Catalog Number:**

21243-1-PBS

**Size:**

100ug, Concentration: 1 mg/ml by Nanodrop;

**Source:**

Rabbit

**Isotype:**

IgG

**Immunogen Catalog Number:**

AG15735

**GenBank Accession Number:**

BC142716

**GeneID (NCBI):**

58513

**UNIPROT ID:**

Q9UBC2

**Full Name:**

epidermal growth factor receptor pathway substrate 15-like 1

**Calculated MW:**

864 aa, 94 kDa

**Observed MW:**

94 kDa

**Purification Method:**

Antigen affinity purification

## Applications

**Tested Applications:**

WB, IHC, IF/ICC, Indirect ELISA

**Species Specificity:**

human

## Background Information

EPS15R is a protein that belongs to the Eps15 family of proteins, which are known for their roles in intracellular trafficking, particularly in the regulation of endocytosis and vesicle formation. EPS15R, like other members of the Eps15 family, functions as a scaffolding adaptor protein and is involved in both secretion and endocytosis. It has been shown to bind to AP-1 and AP-2 complexes, inositol lipids, and several other proteins that are crucial for the regulation of intracellular trafficking. EPS15R is also implicated in the regulation of membrane morphology, which is essential for intracellular vesicle formation and trafficking. It has been detected in the nucleus of mammalian cells, and its activation through growth factor receptors induces tyrosine phosphorylation and mono-ubiquitination, although the specific roles of these post-translational modifications are not yet fully understood.

## Storage

**Storage:**

Store at -80°C.

**Storage Buffer:**

PBS Only

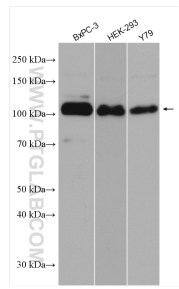
For technical support and original validation data for this product please contact:

T: 1 (888) 4PTGLAB (1-888-478-4522) (toll free in USA), or 1(312) 455-8498 (outside USA)

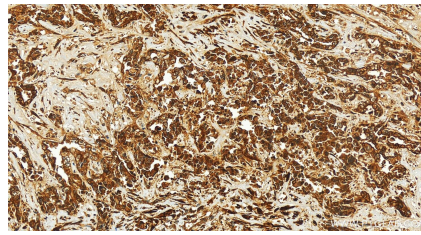
E: [proteintech@ptglab.com](mailto:proteintech@ptglab.com)  
W: [ptglab.com](http://ptglab.com)

**This product is exclusively available under Proteintech Group brand and is not available to purchase from any other manufacturer.**

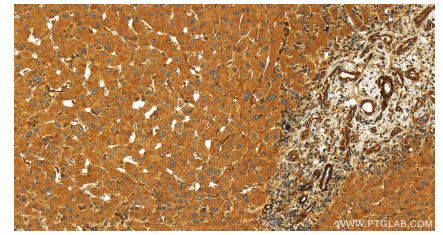
## Selected Validation Data



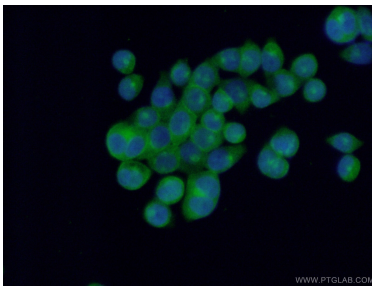
Various lysates were subjected to SDS PAGE followed by western blot with 21243-1-AP (EPS15R antibody) at dilution of 1:7000 incubated at room temperature for 1.5 hours. This data was developed using the same antibody clone with 21243-1-PBS in a different storage buffer formulation.



Immunohistochemical analysis of paraffin-embedded human intrahepatic cholangiocarcinoma tissue slide using 21243-1-AP (EPS15R antibody) at dilution of 1:200 (under 20x lens). Heat mediated antigen retrieval with Tris-EDTA buffer (pH 9.0). This data was developed using the same antibody clone with 21243-1-PBS in a different storage buffer formulation.



Immunohistochemical analysis of paraffin-embedded human intrahepatic cholangiocarcinoma tissue slide using 21243-1-AP (EPS15R antibody) at dilution of 1:200 (under 20x lens). Heat mediated antigen retrieval with Tris-EDTA buffer (pH 9.0). This data was developed using the same antibody clone with 21243-1-PBS in a different storage buffer formulation.



Immunofluorescent analysis of (4% PFA) fixed BxPC-3 cells using 21243-1-AP (EPS15R antibody) at dilution of 1:50 and Alexa Fluor 488-conjugated AffiniPure Goat Anti-Rabbit IgG(H+L). This data was developed using the same antibody clone with 21243-1-PBS in a different storage buffer formulation.