

For Research Use Only

SYT2 Polyclonal antibody

Catalog Number: 21245-1-AP



Basic Information

Catalog Number: 21245-1-AP	GenBank Accession Number: BC100815	Purification Method: Antigen affinity purification
Size: 150ul , Concentration: 550 µg/ml by Nanodrop;	GeneID (NCBI): 127833	Recommended Dilutions: WB 1:500-1:2000 IF 1:50-1:500
Source: Rabbit	Full Name: synaptotagmin II	
Isotype: IgG	Calculated MW: 419 aa, 47 kDa	
Immunogen Catalog Number: AG15744	Observed MW: 70 kDa	

Applications

Tested Applications: IF, WB, ELISA	Positive Controls:
Species Specificity: human, mouse, rat	WB: mouse brain tissue, mouse cerebellum tissue, rat brain tissue, Neuro-2a cells
	IF: mouse cerebellum tissue,

Background Information

SYT2 (Synaptotagmin-2) a synaptic vesicle membrane protein, functions as a calcium sensor in vesicular trafficking and exocytosis. SYT2 is also plays a role in dendrite formation by melanocytes (PMID: 23999003). Mutations in SYT2 are associated with myasthenic syndrome, presynaptic, congenital, with or without motor neuropathy. SYT2 mutations cause a complex presynaptic congenital myasthenic syndrome (PMID: 26519543).

Storage

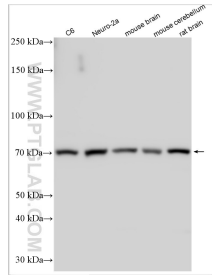
Storage:
Store at -20°C. Stable for one year after shipment.
Storage Buffer:
PBS with 0.02% sodium azide and 50% glycerol pH 7.3.
Aliquoting is unnecessary for -20°C storage

*** 20ul sizes contain 0.1% BSA

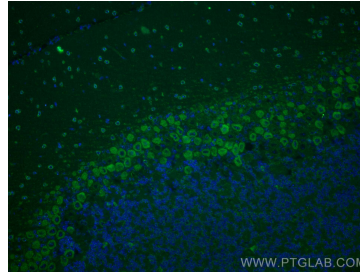
For technical support and original validation data for this product please contact:
T: 1 (888) 4PTGLAB (1-888-478-4522) (toll free in USA), or 1(312) 455-8498 (outside USA) E: proteintech@ptglab.com
W: ptglab.com

This product is exclusively available under Proteintech Group brand and is not available to purchase from any other manufacturer.

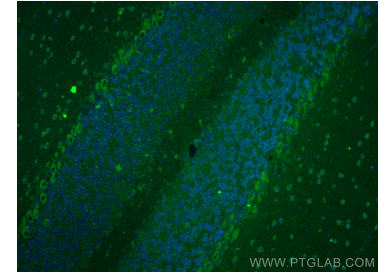
Selected Validation Data



Various lysates were subjected to SDS PAGE followed by western blot with 21245-1-AP (SYT2 antibody) at dilution of 1:1000 incubated at room temperature for 1.5 hours.



Immunofluorescent analysis of (4% PFA) fixed mouse cerebellum tissue using SYT2 antibody (21245-1-AP) at dilution of 1:200 and CoraLite®488-Conjugated AffiniPure Goat Anti-Rabbit IgG(H+L).



Immunofluorescent analysis of (4% PFA) fixed mouse cerebellum tissue using SYT2 antibody (21245-1-AP) at dilution of 1:200 and CoraLite®488-Conjugated AffiniPure Goat Anti-Rabbit IgG(H+L).