

For Research Use Only

HMGB3L1 Polyclonal antibody

Catalog Number: 21246-1-AP

1 Publications



Basic Information

Catalog Number:

21246-1-AP

Size:

150ul, Concentration: 700 ug/ml by Nanodrop and 467 ug/ml by Bradford method using BSA as the standard;

Source:

Rabbit

Isotype:

IgG

Immunogen Catalog Number:

AG15748

GenBank Accession Number:

BC103851

GeneID (NCBI):

128872

Full Name:

high-mobility group box 3-like 1

Calculated MW:

130 aa, 15 kDa

Observed MW:

28-31 kDa

Purification Method:

Antigen affinity purification

Recommended Dilutions:

WB 1:500-1:1000

Applications

Tested Applications:

WB, ELISA

Cited Applications:

WB

Species Specificity:

human

Cited Species:

human

Positive Controls:

WB : HeLa cells, human placenta tissue

Notable Publications

Author	Pubmed ID	Journal	Application
Xudong Chen	25095979	Tumour Biol	WB

Storage

Storage:

Store at -20°C. Stable for one year after shipment.

Storage Buffer:

PBS with 0.02% sodium azide and 50% glycerol pH 7.3.

Aliquoting is unnecessary for -20°C storage

*** 20ul sizes contain 0.1% BSA

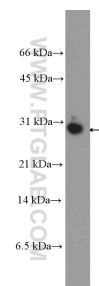
For technical support and original validation data for this product please contact:

T: 1 (888) 4PTGLAB (1-888-478-4522) (toll free in USA), or 1(312) 455-8498 (outside USA)

E: proteintech@ptglab.com
W: ptglab.com

This product is exclusively available under Proteintech Group brand and is not available to purchase from any other manufacturer.

Selected Validation Data



HeLa cells were subjected to SDS PAGE followed by western blot with 21246-1-AP (HMGB3L1 Antibody) at dilution of 1:600 incubated at room temperature for 1.5 hours.