

For Research Use Only

CLEC3A Polyclonal antibody

Catalog Number: 21262-1-AP



Basic Information

Catalog Number: 21262-1-AP	GenBank Accession Number: BC104415	Purification Method: Antigen affinity purification
Size: 150ul , Concentration: 230 ug/ml by Nanodrop;	GeneID (NCBI): 10143	Recommended Dilutions: WB: 1:500-1:2000
Source: Rabbit	UNIPROT ID: O75596	
Isotype: IgG	Full Name: C-type lectin domain family 3, member A	
Immunogen Catalog Number: AG15667	Calculated MW: 197 aa, 22 kDa	
	Observed MW: 23 kDa	

Applications

Tested Applications: WB, ELISA	Positive Controls: WB : MCF-7 cells, MDA-MB-231 cells
Species Specificity: human	

Background Information

CLEC3A (C-type lectin domain family 3 member A), also known as tetranectin-like protein or cartilage-derived C-type lectin, is a secreted glycoprotein belonging to the C-type lectin superfamily. It is encoded by the human gene CLEC3A (Gene ID: 10143, located at 16q22.1) and shares structural homology with tetranectin (CLEC3B). (PMID: 29146595)

Storage

Storage:
Store at -20°C. Stable for one year after shipment.
Storage Buffer:
PBS with 0.02% sodium azide and 50% glycerol, pH7.3
Aliquoting is unnecessary for -20°C storage

*** 20ul sizes contain 0.1% BSA

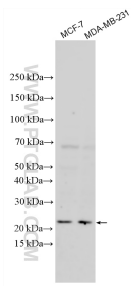
For technical support and original validation data for this product please contact:

T: 1 (888) 4PTGLAB (1-888-478-4522) (toll free in USA), or 1(312) 455-8498 (outside USA)

E: proteintech@ptglab.com
W: ptglab.com

This product is exclusively available under Proteintech Group brand and is not available to purchase from any other manufacturer.

Selected Validation Data



Various lysates were subjected to SDS PAGE followed by western blot with 21262-1-AP (CLEC3A antibody) at dilution of 1:1000 incubated at room temperature for 1.5 hours.