

For Research Use Only

CLEC3A Polyclonal antibody, PBS Only

Catalog Number: 21262-1-PBS



Basic Information

Catalog Number:

21262-1-PBS

Size:

100ug, Concentration: 1 mg/ml by Nanodrop;

Source:

Rabbit

Isotype:

IgG

Immunogen Catalog Number:

AG15667

GenBank Accession Number:

BC104415

GeneID (NCBI):

10143

UNIPROT ID:

O75596

Full Name:

C-type lectin domain family 3, member A

Calculated MW:

197 aa, 22 kDa

Observed MW:

23 kDa

Purification Method:

Antigen affinity purification

Applications

Tested Applications:

WB, Indirect ELISA

Species Specificity:

human

Background Information

CLEC3A (C-type lectin domain family 3 member A), also known as tetranectin-like protein or cartilage-derived C-type lectin, is a secreted glycoprotein belonging to the C-type lectin superfamily. It is encoded by the human gene CLEC3A (Gene ID: 10143, located at 16q22.1) and shares structural homology with tetranectin (CLEC3B). (PMID: 29146595)

Storage

Storage:

Store at -80°C.

Storage Buffer:

PBS only, pH7.3

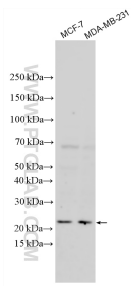
For technical support and original validation data for this product please contact:

T: 1 (888) 4PTGLAB (1-888-478-4522) (toll free in USA), or 1(312) 455-8498 (outside USA)

E: proteintech@ptglab.com
W: ptglab.com

This product is exclusively available under Proteintech Group brand and is not available to purchase from any other manufacturer.

Selected Validation Data



Various lysates were subjected to SDS PAGE followed by western blot with 21262-1-AP (CLEC3A antibody) at dilution of 1:1000 incubated at room temperature for 1.5 hours. This data was developed using the same antibody clone with 21262-1-PBS in a different storage buffer formulation.