

For Research Use Only

CTR9 Polyclonal antibody

Catalog Number: 21264-1-AP

5 Publications



Basic Information

Catalog Number:

21264-1-AP

Size:

150ul, Concentration: 300 ug/ml by Nanodrop and 233 ug/ml by Bradford method using BSA as the standard;

Source:

Rabbit

Isotype:

IgG

Immunogen Catalog Number:

AG15690

GenBank Accession Number:

BC058914

GeneID (NCBI):

9646

UNIPROT ID:

Q6PD62

Full Name:

Ctr9, Paf1/RNA polymerase II complex component, homolog (S. cerevisiae)

Calculated MW:

1173 aa, 134 kDa

Observed MW:

130-150 kDa

Purification Method:

Antigen affinity purification

Recommended Dilutions:

WB 1:500-1:2400

IHC 1:20-1:200

IF/ICC 1:10-1:100

Applications

Tested Applications:

WB, IHC, IF/ICC, ELISA

Cited Applications:

WB, IHC

Species Specificity:

human, mouse, rat

Cited Species:

human, mouse

Note-IHC: suggested antigen retrieval with TE buffer pH 9.0; (*) Alternatively, antigen retrieval may be performed with citrate buffer pH 6.0

Positive Controls:

WB: Raji cells, HEK-293 cells, HeLa cells, L02 cells, mouse lung tissue, mouse testis tissue

IHC: human breast cancer tissue, human colon cancer tissue

IF/ICC: HeLa cells,

Notable Publications

Author	Pubmed ID	Journal	Application
Liangde Zheng	31525119	Autophagy	WB
Gang Xiang	35551175	Cell Death Dis	WB
Zeyuan Zhong	31998129	Front Pharmacol	WB

Storage

Storage:

Store at -20°C. Stable for one year after shipment.

Storage Buffer:

PBS with 0.02% sodium azide and 50% glycerol pH 7.3.

Aliquoting is unnecessary for -20°C storage

*** 20ul sizes contain 0.1% BSA

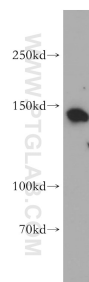
For technical support and original validation data for this product please contact:

T: 1 (888) 4PTGLAB (1-888-478-4522) (toll free in USA), or 1(312) 455-8498 (outside USA)

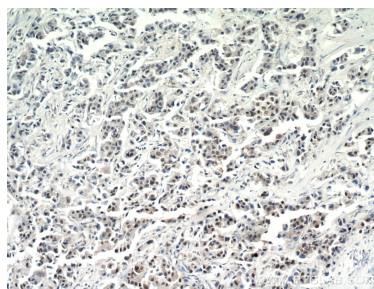
E: proteintech@ptglab.com
W: ptglab.com

This product is exclusively available under Proteintech Group brand and is not available to purchase from any other manufacturer.

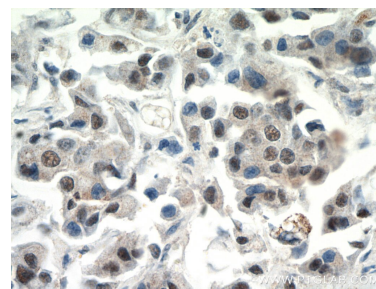
Selected Validation Data



Raji cells were subjected to SDS PAGE followed by western blot with 21264-1-AP (CTR9 antibody) at dilution of 1:500 incubated at room temperature for 1.5 hours.



Immunohistochemical analysis of paraffin-embedded human breast cancer using 21264-1-AP (CTR9 antibody) at dilution of 1:200 (under 10x lens).



Immunohistochemical analysis of paraffin-embedded human breast cancer using 21264-1-AP (CTR9 antibody) at dilution of 1:200 (under 40x lens).



Immunofluorescent analysis of HeLa cells, using CTR9 antibody 21264-1-AP at 1:25 dilution and Rhodamine-labeled goat anti-rabbit IgG (red).