

For Research Use Only

WBSCR17 Polyclonal antibody, PBS Only

Catalog Number: 21280-1-PBS



Basic Information

Catalog Number: 21280-1-PBS	GenBank Accession Number: BC069624	Purification Method: Antigen affinity purification
Size: 100ug, Concentration: 1 mg/ml by Nanodrop;	GeneID (NCBI): 64409	
Source: Rabbit	UNIPROT ID: Q6IS24	
Isotype: IgG	Full Name: Williams-Beuren syndrome chromosome region 17	
Immunogen Catalog Number: AG15792	Calculated MW: 598 aa, 68 kDa	
	Observed MW: 70-90 kDa	

Applications

Tested Applications:
WB, IHC, Indirect ELISA

Species Specificity:
human, mouse, rat

Background Information

WBSCR17, also known as GALNT17, which encodes a brain-expressed N-acetylgalactosaminyl transferase (GalNAcT), is located at the distal edge of a region that is commonly deleted or duplicated in Williams Beuren Syndrome (WBS), a developmental disorder with motor and coordination problems, impaired visuospatial memory, and abnormal social interaction (PMID: 31554716). WBSCR17 loss-of-function has significant effects on cerebellar development, and is associated with phenotypes including developmental delay, deficits in motor coordination, reduced exploratory activity, and impaired social behavior (PMID: 22787146). With the calculated molecular mass of recombinant WBSCR17 being 68 kDa, the 70-90-kDa glycoproteins could also be detected due to post-translational modifications (PMID: 22787146).

Storage

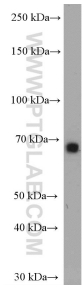
Storage:
Store at -80°C.

Storage Buffer:
PBS only, pH7.3

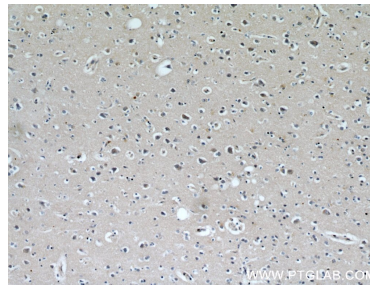
For technical support and original validation data for this product please contact:
T: 1 (888) 4PTGLAB (1-888-478-4522) (toll free in USA), or 1(312) 455-8498 (outside USA) E: proteintech@ptglab.com
W: ptglab.com

This product is exclusively available under Proteintech Group brand and is not available to purchase from any other manufacturer.

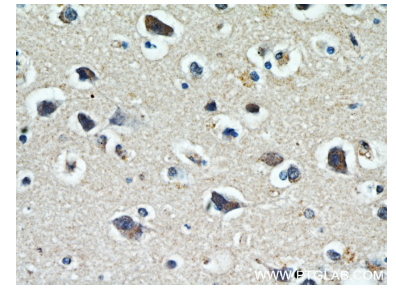
Selected Validation Data



mouse brain tissue were subjected to SDS PAGE followed by western blot with 21280-1-AP (WBSCR17 antibody) at dilution of 1:1000 incubated at room temperature for 1.5 hours. This data was developed using the same antibody clone with 21280-1-PBS in a different storage buffer formulation.



Immunohistochemical analysis of paraffin-embedded human brain using 21280-1-AP (WBSCR17 antibody) at dilution of 1:100 (under 10x lens). This data was developed using the same antibody clone with 21280-1-PBS in a different storage buffer formulation.



Immunohistochemical analysis of paraffin-embedded human brain using 21280-1-AP (WBSCR17 antibody) at dilution of 1:100 (under 40x lens). This data was developed using the same antibody clone with 21280-1-PBS in a different storage buffer formulation.