

For Research Use Only

# SLC39A2 Polyclonal antibody

Catalog Number: 21287-1-AP



## Basic Information

<b>Catalog Number:</b> 21287-1-AP	<b>GenBank Accession Number:</b> BC096723	<b>Purification Method:</b> Antigen affinity purification
<b>Size:</b> 150ul , Concentration: 400 ug/ml by Nanodrop;	<b>GeneID (NCBI):</b> 29986	<b>Recommended Dilutions:</b> WB 1:500-1:1000 IHC 1:50-1:500
<b>Source:</b> Rabbit	<b>UNIPROT ID:</b> Q9NP94	
<b>Isotype:</b> IgG	<b>Full Name:</b> solute carrier family 39 (zinc transporter), member 2	
<b>Immunogen Catalog Number:</b> AG15807	<b>Calculated MW:</b> 309 aa, 33 kDa	
	<b>Observed MW:</b> 33 kDa, 66-70 kDa	

## Applications

<b>Tested Applications:</b> WB, IHC, ELISA	<b>Positive Controls:</b>
<b>Species Specificity:</b> human	<b>WB :</b> K-562 cells, <b>IHC :</b> human colon cancer tissue, mouse brain tissue
<b>Note-IHC: suggested antigen retrieval with TE buffer pH 9.0; (*) Alternatively, antigen retrieval may be performed with citrate buffer pH 6.0</b>	

## Background Information

SLC39A2 (hZIP2) is a human zinc importer in the ZIP family, which is essential in the maintenance of intracellular zinc homeostasis and is upregulated by zinc depletion. SLC39A2 is highly expressed in prostate epithelial cells and is involved in prostate cancer development. Most SLC39 proteins consist of eight transmembrane domains (TMDs), with extracellular or intravesicular amino and carboxy termini (PMID: 34790705). Zip2 gene knockout exacerbated myocardial I/R injury, whereas Zip2 gene transfer reduced myocardial infarction (PMID: 31095941). The predicted molecular weight of SLC39A2 is 33 kDa, and a band of dimers at 66 kDa can also be detected by this antibody (PMID: 24619115).

## Storage

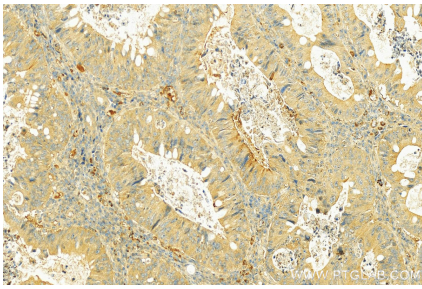
**Storage:**  
Store at -20°C. Stable for one year after shipment.  
**Storage Buffer:**  
PBS with 0.02% sodium azide and 50% glycerol pH 7.3.  
Aliquoting is unnecessary for -20°C storage

\*\*\* 20ul sizes contain 0.1% BSA

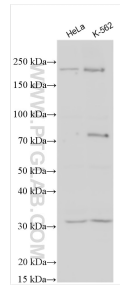
For technical support and original validation data for this product please contact:  
T: 1 (888) 4PTGLAB (1-888-478-4522) (toll free in USA), or 1(312) 455-8498 (outside USA)  
E: proteintech@ptglab.com  
W: ptglab.com

This product is exclusively available under Proteintech Group brand and is not available to purchase from any other manufacturer.

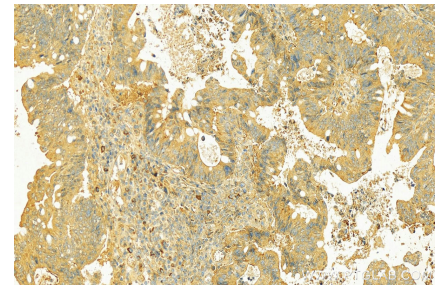
## Selected Validation Data



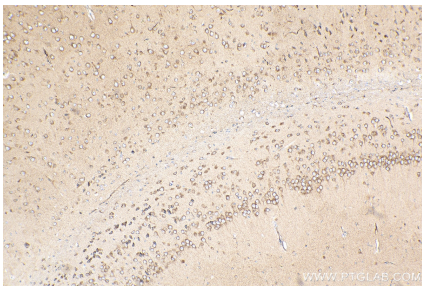
Immunohistochemical analysis of paraffin-embedded Colorectal cancer slide using 21287-1-AP (SLC39A2 antibody) at dilution of 1:100 (under 20x lens). Heat mediated antigen retrieval with Tris-EDTA buffer (pH 9.0).



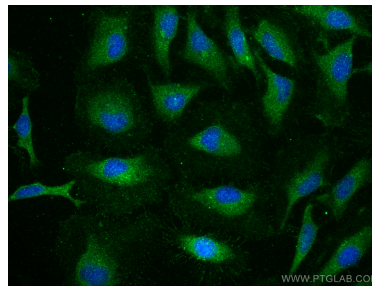
Various lysates were subjected to SDS PAGE followed by western blot with 21287-1-AP (SLC39A2 antibody) at dilution of 1:500 incubated at room temperature for 1.5 hours.



Immunohistochemical analysis of paraffin-embedded Colorectal cancer slide using 21287-1-AP (SLC39A2 antibody) at dilution of 1:100 (under 20x lens). Heat mediated antigen retrieval with Tris-EDTA buffer (pH 9.0).



Immunohistochemical analysis of paraffin-embedded mouse brain tissue slide using 21287-1-AP (SLC39A2 antibody) at dilution of 1:200 (under 10x lens). Heat mediated antigen retrieval with Tris-EDTA buffer (pH 9.0).



Immunofluorescent analysis of (-20°C Ethanol) fixed HeLa cells using SLC39A2 antibody (21287-1-AP) at dilution of 1:400 and Multi-rAb Coralite® Plus 488-Goat Anti-Rabbit Recombinant Secondary Antibody (H+L) (RGAR002).