

For Research Use Only

SMYD2 Polyclonal antibody

Catalog Number: 21290-1-AP

Featured Product

21 Publications



Basic Information

Catalog Number:

21290-1-AP

Size:

150ul, Concentration: 700 ug/ml by Nanodrop;

Source:

Rabbit

Isotype:

IgG

Immunogen Catalog Number:

AG15823

GenBank Accession Number:

BC098305

GeneID (NCBI):

56950

UNIPROT ID:

Q9NRG4

Full Name:

SET and MYND domain containing 2

Calculated MW:

433 aa, 50 kDa

Observed MW:

50 kDa

Purification Method:

Antigen affinity purification

Recommended Dilutions:

WB 1:1000-1:4000

IHC 1:50-1:500

IF/ICC 1:50-1:500

Applications

Tested Applications:

WB, IHC, IF/ICC, ELISA

Cited Applications:

WB, IHC, IF

Species Specificity:

human, mouse, rat

Cited Species:

human, mouse, rat

Note-IHC: suggested antigen retrieval with TE buffer pH 9.0; (*) Alternatively, antigen retrieval may be performed with citrate buffer pH 6.0

Positive Controls:

WB: C2C12 cell, HEK-293 cells, C2C12 cells, U2OS cells, mouse heart tissue, rat heart tissue

IHC: rat heart tissue,

IF/ICC: HeLa cells,

Background Information

SMYD2, also known as SET and MYND domain containing 2, encodes an enzyme called N-lysine methyltransferase SMYD2, which plays a crucial role in cellular processes, including histone methylation, non-histone protein methylation, cell proliferation and differentiation, DNA repair (PMID: 18065756, PMID: 36191822). Aberrant SMYD2 expression has been linked to various cancers, including colon cancer, lung cancer, and cervical cancer. Smyd2 is strongly expressed in muscle cells with highest expression in the neonatal heart (PMID: 25125178).

Notable Publications

Author	Pubmed ID	Journal	Application
Libin Yan	31754403	Theranostics	IHC
Haibi Su	36270984	Cell Death Dis	WB
Ying Wang	34015314	Exp Cell Res	WB

Storage

Storage:

Store at -20°C. Stable for one year after shipment.

Storage Buffer:

PBS with 0.02% sodium azide and 50% glycerol pH 7.3.

Aliquoting is unnecessary for -20°C storage

*** 20ul sizes contain 0.1% BSA

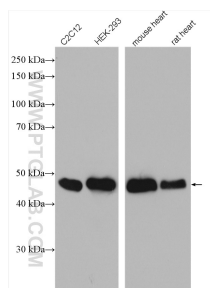
For technical support and original validation data for this product please contact:

T: 1 (888) 4PTGLAB (1-888-478-4522) (toll free in USA), or 1(312) 455-8498 (outside USA)

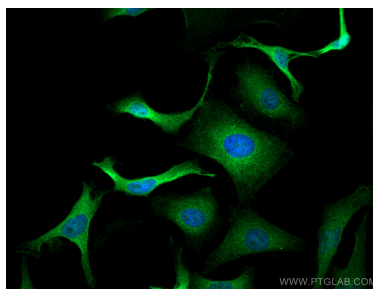
E: proteintech@ptglab.com
W: ptglab.com

This product is exclusively available under Proteintech Group brand and is not available to purchase from any other manufacturer.

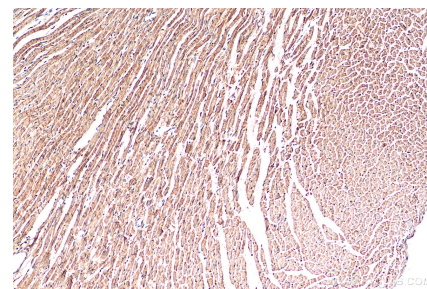
Selected Validation Data



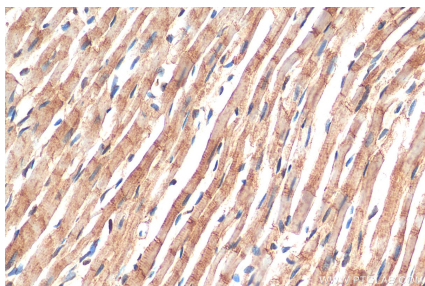
Various lysates were subjected to SDS PAGE followed by western blot with 21290-1-AP (SMYD2 antibody) at dilution of 1:2000 incubated at room temperature for 1.5 hours.



Immunofluorescent analysis of (4% PFA) fixed HeLa cells using SMYD2 antibody (21290-1-AP) at dilution of 1:200 and CoraLite®488-Conjugated Goat Anti-Rabbit IgG(H+L).



Immunohistochemical analysis of paraffin-embedded rat heart tissue slide using 21290-1-AP (SMYD2 antibody) at dilution of 1:200 (under 10x lens). Heat mediated antigen retrieval with Tris-EDTA buffer (pH 9.0).



Immunohistochemical analysis of paraffin-embedded rat heart tissue slide using 21290-1-AP (SMYD2 antibody) at dilution of 1:200 (under 40x lens). Heat mediated antigen retrieval with Tris-EDTA buffer (pH 9.0).