

For Research Use Only

MANEA Polyclonal antibody, PBS Only

Catalog Number: 21296-1-PBS



Basic Information

Catalog Number:

21296-1-PBS

Size:

100ug, Concentration: 1 mg/ml by Nanodrop;

Source:

Rabbit

Isotype:

IgG

Immunogen Catalog Number:

AG15847

GenBank Accession Number:

BC146671

GeneID (NCBI):

79694

UNIPROT ID:

Q5SRI9

Full Name:

mannosidase, endo-alpha

Calculated MW:

462 aa, 54 kDa

Observed MW:

54 kDa

Purification Method:

Antigen affinity purification

Applications

Tested Applications:

WB, IHC, IF/ICC, Indirect ELISA

Species Specificity:

human, mouse

Storage

Storage:

Store at -80°C.

Storage Buffer:

PBS Only

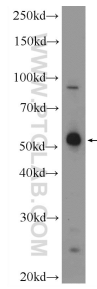
For technical support and original validation data for this product please contact:

T: 1 (888) 4PTGLAB (1-888-478-4522) (toll free in USA), or 1(312) 455-8498 (outside USA)

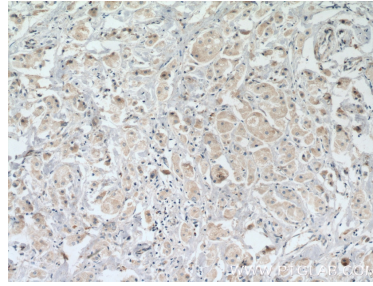
E: proteintech@ptglab.com
W: ptglab.com

This product is exclusively available under Proteintech Group brand and is not available to purchase from any other manufacturer.

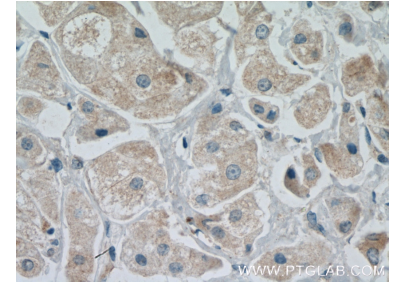
Selected Validation Data



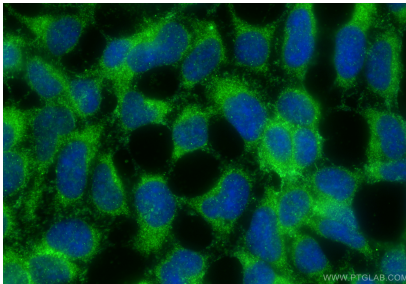
HEK-293 cells were subjected to SDS PAGE followed by western blot with 21296-1-AP (MANEA Antibody) at dilution of 1:300 incubated at room temperature for 1.5 hours. This data was developed using the same antibody clone with 21296-1-PBS in a different storage buffer formulation.



Immunohistochemical analysis of paraffin-embedded human breast cancer tissue slide using 21296-1-AP (MANEA Antibody) at dilution of 1:200 (under 10x lens). Heat mediated antigen retrieved with Sodium Citrate buffer (pH 6.0). This data was developed using the same antibody clone with 21296-1-PBS in a different storage buffer formulation.



Immunohistochemical analysis of paraffin-embedded human breast cancer tissue slide using 21296-1-AP (MANEA Antibody) at dilution of 1:200 (under 40x lens). Heat mediated antigen retrieved with Sodium Citrate buffer (pH 6.0). This data was developed using the same antibody clone with 21296-1-PBS in a different storage buffer formulation.



Immunofluorescent analysis of (-20°C Ethanol) fixed HEK-293 cells using MANEA antibody (21296-1-AP) at dilution of 1:400 and CoraLite@488-Conjugated Goat Anti-Rabbit IgG(H+L) (SA00013-2). This data was developed using the same antibody clone with 21296-1-PBS in a different storage buffer formulation.