

For Research Use Only

JAML Polyclonal antibody

Catalog Number: 21302-1-AP **3 Publications**



Basic Information

Catalog Number: 21302-1-AP	GenBank Accession Number: BC100797	Purification Method: Antigen affinity purification
Size: 150ul, Concentration: 500 µg/ml by Nanodrop and 333 µg/ml by Bradford method using BSA as the standard;	GeneID (NCBI): 120425	Recommended Dilutions: WB 1:1000-1:4000 IHC 1:20-1:200 IF 1:10-1:100
Source: Rabbit	Full Name: adhesion molecule, interacts with CXADR antigen 1	
Isotype: IgG	Calculated MW: 394 aa, 44 kDa	
Immunogen Catalog Number: AG15900	Observed MW: 44 kDa, 50-70 kDa	

Applications

Tested Applications: FC, IF, IHC, WB, ELISA	Positive Controls: WB : HL-60 cells, Jurkat cells, L02 cells
Cited Applications: IF, IHC, WB	IHC : human spleen tissue,
Species Specificity: human	IF : HeLa cells,
Cited Species: human, mouse	

Note-IHC: suggested antigen retrieval with TE buffer pH 9.0; (*) Alternatively, antigen retrieval may be performed with citrate buffer pH 6.0

Background Information

Junctional adhesion molecules (JAM-A, JAM-B, and JAM-C) are endothelial and epithelial adhesion molecules involved in the recruitment of circulating leukocytes to inflammatory sites (PMID: 19064666). JAML (junctional adhesion molecule-like), also known as AMICA1, is related to JAM proteins. It contains 2 extracellular immunoglobulin-like domains, a transmembrane segment, and a cytoplasmic tail. JAML is expressed on leukocytes and promotes their adhesion to endothelial cells (PMID: 12869515). JAML can regulate neutrophil transepithelial migration via binding interactions with epithelial coxsackie and adenovirus receptor (CAR) (PMID: 15800062). The full-length human JAML protein has a calculated molecular weight of 44 kDa. This antibody raised against 40-275 aa of human JAML protein detects bands with molecular weight of 44 kDa, and 50-70 kDa which probably represent different glycoforms of the protein (PMID: 12869515; 24621992; 15800062).

Notable Publications

Author	Pubmed ID	Journal	Application
Qian Wu	35672776	J Transl Med	IHC,IF
Yu Sun	31101724	Clin Sci (Lond)	IHC,IF
Wei Gu	35090936	Eur J Pharmacol	WB,IHC

Storage

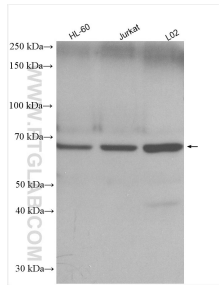
Storage:
Store at -20°C. Stable for one year after shipment.
Storage Buffer:
PBS with 0.02% sodium azide and 50% glycerol pH 7.3.
Aliquoting is unnecessary for -20°C storage

***** 20ul sizes contain 0.1% BSA**

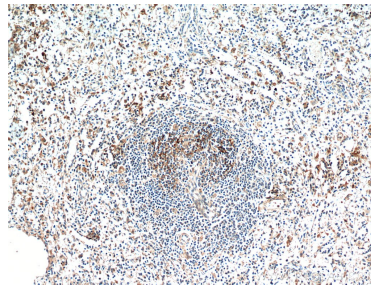
For technical support and original validation data for this product please contact:
T: 1 (888) 4PTGLAB (1-888-478-4522) (toll free in USA), or 1(312) 455-8498 (outside USA)
E: proteintech@ptglab.com
W: ptglab.com

This product is exclusively available under Proteintech Group brand and is not available to purchase from any other manufacturer.

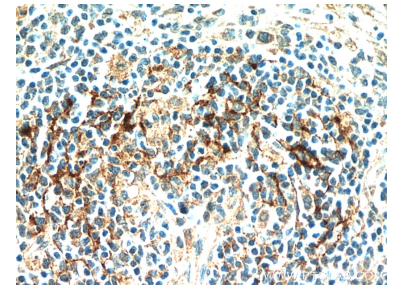
Selected Validation Data



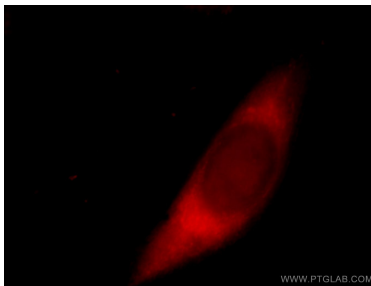
Various lysates were subjected to SDS PAGE followed by western blot with 21302-1-AP (JAML antibody) at dilution of 1:2000 incubated at room temperature for 1.5 hours.



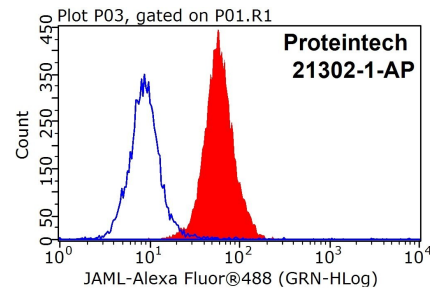
Immunohistochemical analysis of paraffin-embedded human spleen using 21302-1-AP (JAML antibody) at dilution of 1:100 (under 10x lens).



Immunohistochemical analysis of paraffin-embedded human spleen using 21302-1-AP (JAML antibody) at dilution of 1:100 (under 40x lens).



Immunofluorescent analysis of HeLa cells, using AMICA1 antibody 21302-1-AP at 1:25 dilution and Rhodamine-labeled goat anti-rabbit IgG (red).



1x10⁶ HeLa cells were stained with 0.2ug JAML antibody (21302-1-AP, red) and control antibody (blue). Fixed with 90% MeOH blocked with 3% BSA (30 min). FITC-Goat anti-Rabbit IgG with dilution 1:100.