

For Research Use Only

# JAML Polyclonal antibody, PBS Only

Catalog Number: 21302-1-PBS



## Basic Information

<b>Catalog Number:</b> 21302-1-PBS	<b>GenBank Accession Number:</b> BC100797	<b>Purification Method:</b> Antigen affinity purification
<b>Size:</b> 100ug, Concentration: 1 mg/ml by Nanodrop;	<b>GeneID (NCBI):</b> 120425	
<b>Source:</b> Rabbit	<b>UNIPROT ID:</b> Q86YT9	
<b>Isotype:</b> IgG	<b>Full Name:</b> adhesion molecule, interacts with CXADR antigen 1	
<b>Immunogen Catalog Number:</b> AG15900	<b>Calculated MW:</b> 394 aa, 44 kDa	
	<b>Observed MW:</b> 44 kDa, 50-70 kDa	

## Applications

**Tested Applications:**  
WB, IHC, Indirect ELISA

**Species Specificity:**  
human

## Background Information

Junctional adhesion molecules (JAM-A, JAM-B, and JAM-C) are endothelial and epithelial adhesion molecules involved in the recruitment of circulating leukocytes to inflammatory sites (PMID: 19064666). JAML (junctional adhesion molecule-like), also known as AMICA1, is related to JAM proteins. It contains 2 extracellular immunoglobulin-like domains, a transmembrane segment, and a cytoplasmic tail. JAML is expressed on leukocytes and promotes their adhesion to endothelial cells (PMID: 12869515). JAML can regulate neutrophil transepithelial migration via binding interactions with epithelial coxsackie and adenovirus receptor (CAR) (PMID: 15800062). The full-length human JAML protein has a calculated molecular weight of 44 kDa. This antibody raised against 40-275 aa of human JAML protein detects bands with molecular weight of 44 kDa, and 50-70 kDa which probably represent different glycoforms of the protein (PMID: 12869515; 24621992; 15800062).

## Storage

**Storage:**  
Store at -80°C.

**Storage Buffer:**  
PBS Only

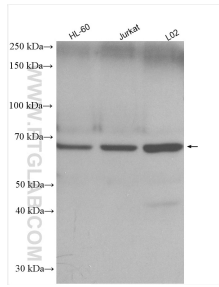
For technical support and original validation data for this product please contact:

T: 1 (888) 4PTGLAB (1-888-478-4522) (toll free in USA), or 1(312) 455-8498 (outside USA)

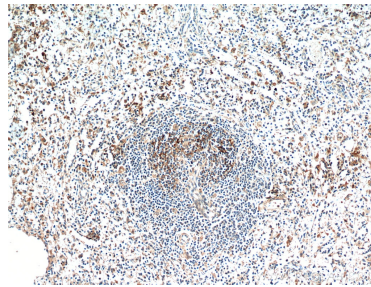
E: [proteintech@ptglab.com](mailto:proteintech@ptglab.com)  
W: [ptglab.com](http://ptglab.com)

This product is exclusively available under Proteintech Group brand and is not available to purchase from any other manufacturer.

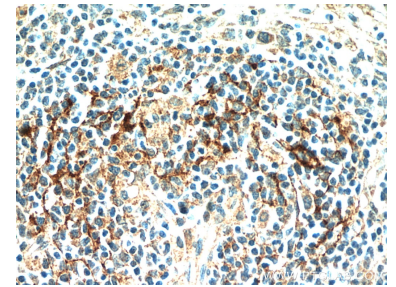
## Selected Validation Data



Various lysates were subjected to SDS PAGE followed by western blot with 21302-1-AP (JAML antibody) at dilution of 1:2000 incubated at room temperature for 1.5 hours. This data was developed using the same antibody clone with 21302-1-PBS in a different storage buffer formulation.



Immunohistochemical analysis of paraffin-embedded human spleen using 21302-1-AP (JAML antibody) at dilution of 1:100 (under 10x lens). This data was developed using the same antibody clone with 21302-1-PBS in a different storage buffer formulation.



Immunohistochemical analysis of paraffin-embedded human spleen using 21302-1-AP (JAML antibody) at dilution of 1:100 (under 40x lens). This data was developed using the same antibody clone with 21302-1-PBS in a different storage buffer formulation.