

For Research Use Only

# SIX4 Polyclonal antibody, PBS Only

Catalog Number: 21305-1-PBS



## Basic Information

**Catalog Number:**

21305-1-PBS

**Size:**

100ug, Concentration: 1 mg/ml by Nanodrop;

**Source:**

Rabbit

**Isotype:**

IgG

**Immunogen Catalog Number:**

AG15918

**GenBank Accession Number:**

BC098282

**GeneID (NCBI):**

51804

**UNIPROT ID:**

Q9UIU6

**Full Name:**

SIX homeobox 4

**Calculated MW:**

781 aa, 83 kDa

**Observed MW:**

98 kDa

**Purification Method:**

Antigen affinity purification

## Applications

**Tested Applications:**

WB, IHC, IF/ICC, Indirect ELISA

**Species Specificity:**

human, mouse, rat

## Background Information

The Six (sine oculis) proteins are a family of homeodomain transcription factors that share a conserved DNA-binding domain and are human homologs of the Drosophila sine oculis (so) protein. SIX homeobox 4 (SIX4), also known as AREC3, belongs to the Six family. Six4 contains one Six domain (which functions as a homeobox DNA-binding motif) and shares 90% sequence similarity with its mouse counterpart, suggesting that both proteins have similar DNA-binding properties. SIX4 is thought to be involved in neurogenesis, myogenesis, and development of other organs, based on its specific expression in certain neuronal cells of the developing embryo and in adult skeletal muscles.

## Storage

**Storage:**

Store at -80°C.

**Storage Buffer:**

PBS only, pH7.3

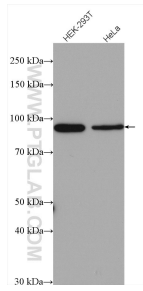
For technical support and original validation data for this product please contact:

T: 1 (888) 4PTGLAB (1-888-478-4522) (toll free in USA), or 1(312) 455-8498 (outside USA)

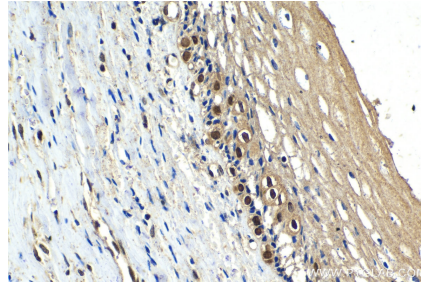
E: [proteintech@ptglab.com](mailto:proteintech@ptglab.com)  
W: [ptglab.com](http://ptglab.com)

**This product is exclusively available under Proteintech Group brand and is not available to purchase from any other manufacturer.**

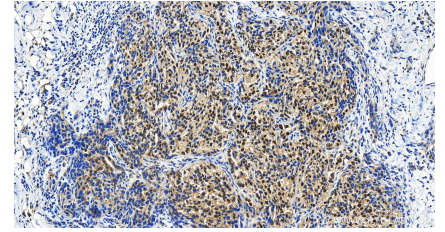
## Selected Validation Data



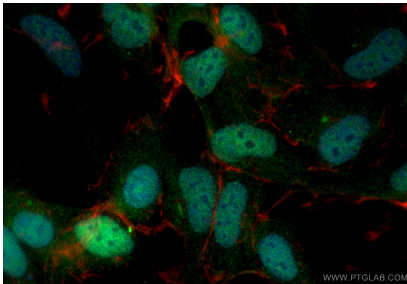
Various lysates were subjected to SDS PAGE followed by western blot with 21305-1-AP (SIX4 antibody) at dilution of 1:2000 incubated at room temperature for 1.5 hours. This data was developed using the same antibody clone with 21305-1-PBS in a different storage buffer formulation.



Immunohistochemical analysis of paraffin-embedded human cervical cancer tissue slide using 21305-1-AP (SIX4 antibody) at dilution of 1:500 (under 40x lens). Heat mediated antigen retrieval with Tris-EDTA buffer (pH 9.0). This data was developed using the same antibody clone with 21305-1-PBS in a different storage buffer formulation.



Immunohistochemical analysis of paraffin-embedded human ovary cancer tissue slide using 21305-1-AP (SIX4 antibody) at dilution of 1:500 (under 20x lens). Heat mediated antigen retrieval with Tris-EDTA buffer (pH 9.0). This data was developed using the same antibody clone with 21305-1-PBS in a different storage buffer formulation.



Immunofluorescent analysis of (4% PFA) fixed HEK-293 cells using SIX4 antibody (21305-1-AP) at dilution of 1:400 and CoralLite@488-Conjugated Goat Anti-Rabbit IgG(H+L) (SA00013-2), CL594-phalloidin (red). This data was developed using the same antibody clone with 21305-1-PBS in a different storage buffer formulation.