

For Research Use Only

# EMILIN3 Polyclonal antibody

Catalog Number: 21308-1-AP



## Basic Information

### Catalog Number:

21308-1-AP

### Size:

150ul , Concentration: 450 ug/ml by Nanodrop;

### Source:

Rabbit

### Isotype:

IgG

### Immunogen Catalog Number:

AG15925

### GenBank Accession Number:

BC101045

### GeneID (NCBI):

90187

### UNIPROT ID:

Q9NT22

### Full Name:

elastin microfibril interfacer 3

### Calculated MW:

766 aa, 83 kDa

### Observed MW:

83 kDa

### Purification Method:

Antigen affinity purification

### Recommended Dilutions:

IP 0.5-4.0 ug for 1.0-3.0 mg of total protein lysate

## Applications

### Tested Applications:

IP, ELISA

### Species Specificity:

human

### Positive Controls:

IP : COLO 320 cells,

## Background Information

EMILIN3 (Elastin Microfibril Interfacer 3) is a protein-coding gene that encodes an extracellular matrix glycoprotein. It is a member of the EMILIN family and plays a role in the organization of the extracellular matrix, particularly in elastic fiber formation and extracellular matrix organization.

## Storage

### Storage:

Store at -20°C. Stable for one year after shipment.

### Storage Buffer:

PBS with 0.02% sodium azide and 50% glycerol, pH7.3

Aliquoting is unnecessary for -20°C storage

\*\*\* 20ul sizes contain 0.1% BSA

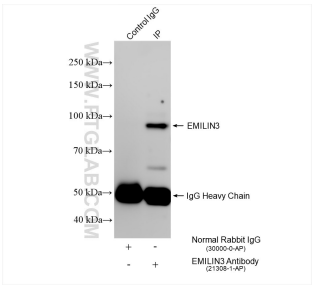
For technical support and original validation data for this product please contact:

T: 1 (888) 4PTGLAB (1-888-478-4522) (toll free in USA), or 1(312) 455-8498 (outside USA)

E: [proteintech@ptglab.com](mailto:proteintech@ptglab.com)  
W: [ptglab.com](http://ptglab.com)

This product is exclusively available under Proteintech Group brand and is not available to purchase from any other manufacturer.

## Selected Validation Data



IP result of anti-EMILIN3 (IP:21308-1-AP, 4ug;  
Detection:21308-1-AP 1:600) with COLO 320 cells  
lysate 1920 ug.