

For Research Use Only

# NHLRC1 Polyclonal antibody

Catalog Number: 21310-1-AP



## Basic Information

<b>Catalog Number:</b> 21310-1-AP	<b>GenBank Accession Number:</b> BC103888	<b>Purification Method:</b> Antigen affinity purification
<b>Size:</b> 150ul , Concentration: 450 µg/ml by Nanodrop and 300 µg/ml by Bradford method using BSA as the standard;	<b>GeneID (NCBI):</b> 378884	<b>Recommended Dilutions:</b> WB 1:500-1:1000 IHC 1:20-1:200
<b>Source:</b> Rabbit	<b>Full Name:</b> NHL repeat containing 1	
<b>Isotype:</b> IgG	<b>Calculated MW:</b> 395 aa, 42 kDa	
<b>Immunogen Catalog Number:</b> AG15940	<b>Observed MW:</b> 45-47 kDa	

## Applications

<b>Tested Applications:</b> IHC, WB, ELISA	<b>Positive Controls:</b> WB : L02 cells, IHC : human heart tissue, human brain tissue
<b>Species Specificity:</b> human	
<b>Note-IHC: suggested antigen retrieval with TE buffer pH 9.0; (*) Alternatively, antigen retrieval may be performed with citrate buffer pH 6.0</b>	

## Background Information

NHLRC1(NHL repeat-containing protein 1) is also named as Malin, EPM2B. It is predicted to encode a 42.3-kDa (395 amino acid) protein, malin, containing a detectable zinc-binding RING finger and six NHL-repeat domains (PMID:12958597). It can suppress the cellular toxicity of misfolded proteins by promoting their degradation through the ubiquitin-proteasome system (UPS). Defects in NHLRC1 are a cause of progressive myoclonic epilepsy type 2 (EPM2). This antibody is specific to NHLRC1.

## Storage

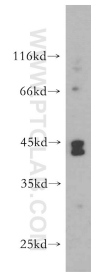
**Storage:**  
Store at -20°C. Stable for one year after shipment.  
**Storage Buffer:**  
PBS with 0.02% sodium azide and 50% glycerol pH 7.3.  
Aliquoting is unnecessary for -20°C storage

\*\*\* 20ul sizes contain 0.1% BSA

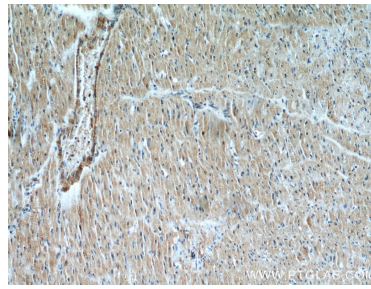
For technical support and original validation data for this product please contact:  
T: 1 (888) 4PTGLAB (1-888-478-4522) (toll free in USA), or 1(312) 455-8498 (outside USA)  
E: proteintech@ptglab.com  
W: ptglab.com

This product is exclusively available under Proteintech Group brand and is not available to purchase from any other manufacturer.

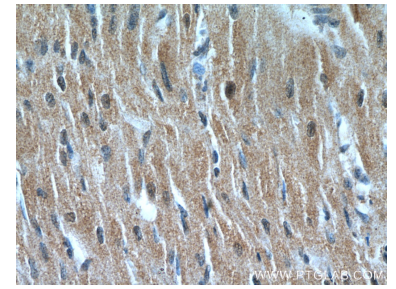
## Selected Validation Data



L02 cells were subjected to SDS PAGE followed by western blot with 21310-1-AP (NHLRC1 antibody) at dilution of 1:400 incubated at room temperature for 1.5 hours.



Immunohistochemical analysis of paraffin-embedded human heart using 21310-1-AP (NHLRC1 antibody) at dilution of 1:50 (under 10x lens).



Immunohistochemical analysis of paraffin-embedded human heart using 21310-1-AP (NHLRC1 antibody) at dilution of 1:50 (under 40x lens).