

DEPDC6 Polyclonal antibody

Catalog Number: 21312-1-AP

Basic Information

Catalog Number:

21312-1-AP

Size:

150ul, Concentration: 200 ug/ml by Nanodrop and 207 ug/ml by Bradford method using BSA as the standard;

Source:

Rabbit

Isotype:

IgG

Immunogen Catalog Number:

AG15959

GenBank Accession Number:

BC024746

GeneID (NCBI):

64798

UNIPROT ID:

Q8TB45

Full Name:

DEP domain containing 6

Calculated MW:

409 aa, 46 kDa

Observed MW:

55 kDa

Purification Method:

Antigen affinity purification

Recommended Dilutions:

WB 1:500-1:1000

IHC 1:20-1:200

Applications

Tested Applications:

WB, IHC, ELISA

Species Specificity:

human

Note-IHC: suggested antigen retrieval with **TE buffer pH 9.0; (*)** Alternatively, antigen retrieval may be performed with **citrate buffer pH 6.0**

Positive Controls:

WB : HeLa cells, COLO 320 cells, HT-1080 cells

IHC : human thyroid cancer tissue,

Background Information

DEPTOR, also named as DEPDC6, is a negative regulator of the mTORC1 and mTORC2 signaling pathways. Through mTOR interactions, DEPTOR is implicated in pathways for cell growth and differentiation, as well as cell-cycle prolongation or termination. It inhibits the kinase activity of both complexes. The MW will migrate to 50-55 kDa with phospho- form.

Storage

Storage:

Store at -20°C. Stable for one year after shipment.

Storage Buffer:

PBS with 0.02% sodium azide and 50% glycerol pH 7.3.

Aliquoting is unnecessary for -20°C storage

***** 20ul sizes contain 0.1% BSA**

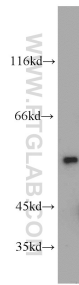
For technical support and original validation data for this product please contact:

T: 1 (888) 4PTGLAB (1-888-478-4522) (toll free in USA), or 1(312) 455-8498 (outside USA)

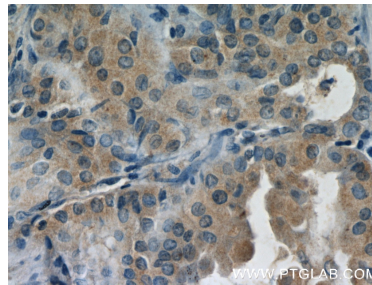
E: proteintech@ptglab.com
W: ptglab.com

This product is exclusively available under Proteintech Group brand and is not available to purchase from any other manufacturer.

Selected Validation Data



HeLa cells were subjected to SDS PAGE followed by western blot with 21312-1-AP (DEPDC6 antibody) at dilution of 1:500 incubated at room temperature for 1.5 hours.



Immunohistochemical analysis of paraffin-embedded human thyroid cancer slide using 21312-1-AP (DEPDC6 Antibody) at dilution of 1:50.