

For Research Use Only

GTSE1 Polyclonal antibody

Catalog Number: 21319-1-AP

Featured Product

12 Publications



Basic Information

Catalog Number:

21319-1-AP

Size:

150ul, Concentration: 450 ug/ml by Nanodrop and 300 ug/ml by Bradford method using BSA as the standard;

Source:

Rabbit

Isotype:

IgG

Immunogen Catalog Number:

AG13497

GenBank Accession Number:

BC006325

GeneID (NCBI):

51512

UNIPROT ID:

Q9NYZ3

Full Name:

G-2 and S-phase expressed 1

Calculated MW:

77 kDa

Observed MW:

66-77 kDa, 100 kDa

Purification Method:

Antigen affinity purification

Recommended Dilutions:

WB 1:1000-1:8000

IHC 1:50-1:500

Applications

Tested Applications:

WB, IHC, ELISA

Cited Applications:

WB, IHC, IF

Species Specificity:

human, mouse, rat

Cited Species:

human, mouse

Note-IHC: suggested antigen retrieval with TE buffer pH 9.0; (*) Alternatively, antigen retrieval may be performed with citrate buffer pH 6.0

Positive Controls:

WB: HeLa cells, SH-SY5Y cells, MCF-7 cells, mouse liver tissue, K-562 cells, L02 cells, rat liver tissue

IHC: human liver cancer tissue, mouse spleen tissue

Background Information

GTSE1 is only expressed in the S and G2 phases of the cell cycle, where it colocalizes with cytoplasmic tubulin and microtubules. In response to DNA damage, the encoded protein accumulates in the nucleus and binds the tumor suppressor protein p53, shuttling it out of the nucleus and repressing its ability to induce apoptosis.

Notable Publications

Author	Pubmed ID	Journal	Application
Man Zhang	36193884	Mol Carcinog	WB,IHC,IF
Lei Guo	27240802	Cell Biol Toxicol	WB,IHC
Weihao Chen	35585131	Lab Invest	WB,IHC

Storage

Storage:

Store at -20°C. Stable for one year after shipment.

Storage Buffer:

PBS with 0.02% sodium azide and 50% glycerol pH 7.3.

Aliquoting is unnecessary for -20°C storage

*** 20ul sizes contain 0.1% BSA

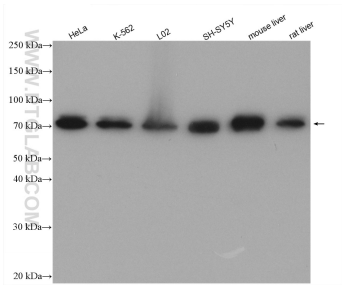
For technical support and original validation data for this product please contact:

T: 1 (888) 4PTGLAB (1-888-478-4522) (toll free in USA), or 1(312) 455-8498 (outside USA)

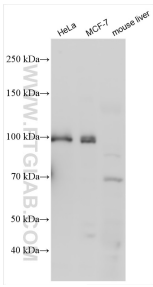
E: proteintech@ptglab.com
W: ptglab.com

This product is exclusively available under Proteintech Group brand and is not available to purchase from any other manufacturer.

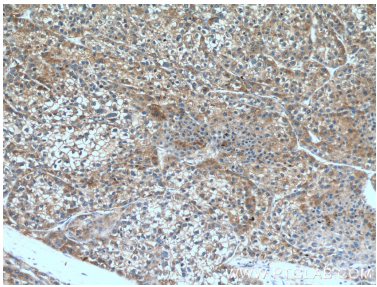
Selected Validation Data



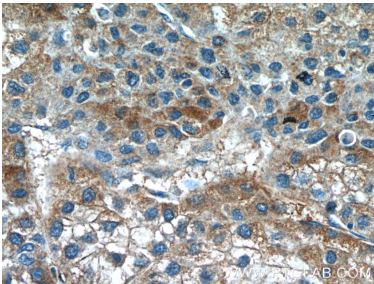
Various lysates were subjected to SDS PAGE followed by western blot with 21319-1-AP (GTSE1 antibody) at dilution of 1:4000 incubated at room temperature for 1.5 hours.



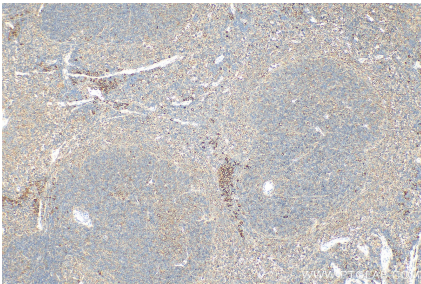
Various lysates were subjected to SDS PAGE followed by western blot with 21319-1-AP (GTSE1 antibody) at dilution of 1:4000 incubated at room temperature for 1.5 hours.



Immunohistochemical analysis of paraffin-embedded human liver cancer tissue slide using 21319-1-AP (GTSE1 antibody) at dilution of 1:200 (under 10x lens).



Immunohistochemical analysis of paraffin-embedded human liver cancer tissue slide using 21319-1-AP (GTSE1 antibody) at dilution of 1:200 (under 40x lens).



Immunohistochemical analysis of paraffin-embedded mouse spleen tissue slide using 21319-1-AP (GTSE1 antibody) at dilution of 1:200 (under 10x lens). Heat mediated antigen retrieval with Tris-EDTA buffer (pH 9.0).