

For Research Use Only

# ZDHHC5 Polyclonal antibody

Catalog Number: 21324-1-AP

Featured Product

12 Publications



## Basic Information

**Catalog Number:**

21324-1-AP

**Size:**

150ul, Concentration: 450 µg/ml by Nanodrop;

**Source:**

Rabbit

**Isotype:**

IgG

**Immunogen Catalog Number:**

AG14891

**GenBank Accession Number:**

BC026967

**GeneID (NCBI):**

25921

**UNIPROT ID:**

Q9C0B5

**Full Name:**

zinc finger, DHHC-type containing 5

**Calculated MW:**

715 aa, 78 kDa

**Observed MW:**

77 kDa

**Purification Method:**

Antigen affinity purification

**Recommended Dilutions:**

WB 1:500-1:2000

IP 0.5-4.0 µg for 1.0-3.0 mg of total protein lysate

IF 1:200-1:800

## Applications

**Tested Applications:**

WB, IP, IF, FC, ELISA

**Cited Applications:**

WB, IP, IF, CoIP

**Species Specificity:**

human, mouse, rat

**Cited Species:**

human, mouse

**Positive Controls:**

**WB :** mouse kidney tissue, HEK-293 cells, HeLa cells, mouse brain tissue

**IP :** HEK-293 cells,

**IF :** HeLa cells,

## Background Information

The gene encoding zinc finger DHHC-type-containing (ZDHHC)5 is located in a region of chromosome 11q12.1 associated with a high rate of chromosomal translocation and variation, which has been linked to the development of various cancers. ZDHHC5 stimulates the proliferation and anchorage-dependent and -independent colony formation of non-small cell lung cancer cell lines, and was found to be required in a subset of these cells for establishment of tumor xenografts in mice. ZDHHC5 is highly expressed in a variety of embryonic cells including neural progenitor cells, but not in most adult tissues.

## Notable Publications

Author	Pubmed ID	Journal	Application
Yinxia Li	34559357	Mol Neurobiol	WB,CoIP
Han Zhang	36309154	J Nutr Biochem	WB
Shaymaa Mohamed Mohamed Badawy	29185452	Sci Rep	WB,IF,IP

## Storage

**Storage:**

Store at -20°C. Stable for one year after shipment.

**Storage Buffer:**

PBS with 0.02% sodium azide and 50% glycerol pH 7.3.

Aliquoting is unnecessary for -20°C storage

\*\*\* 20ul sizes contain 0.1% BSA

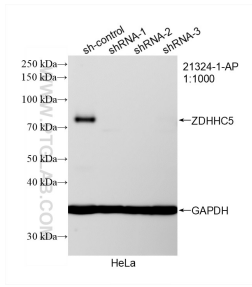
For technical support and original validation data for this product please contact:

T: 1 (888) 4PTGLAB (1-888-478-4522) (toll free in USA), or 1(312) 455-8498 (outside USA)

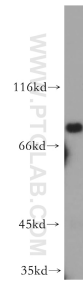
E: [proteintech@ptglab.com](mailto:proteintech@ptglab.com)  
W: [ptglab.com](http://ptglab.com)

This product is exclusively available under Proteintech Group brand and is not available to purchase from any other manufacturer.

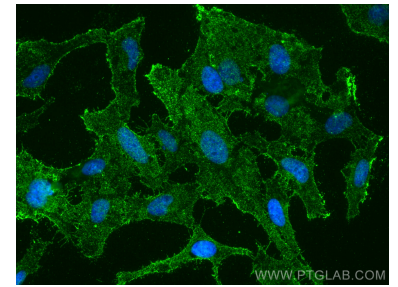
## Selected Validation Data



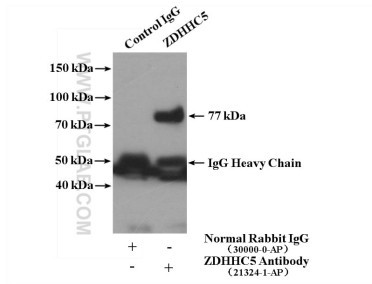
WB result of ZDHHC5 antibody (21324-1-AP; 1:1000; incubated at room temperature for 1.5 hours) with sh-Control and sh-ZDHHC5 transfected HeLa cells.



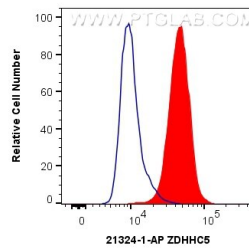
mouse kidney tissue were subjected to SDS PAGE followed by western blot with 21324-1-AP (ZDHHC5 antibody) at dilution of 1:500 incubated at room temperature for 1.5 hours.



Immunofluorescent analysis of (-20°C Methanol) fixed HeLa cells using ZDHHC5 antibody (21324-1-AP) at dilution of 1:400 and CoraLite@488-Conjugated AffiniPure Goat Anti-Rabbit IgG(H+L).



IP result of anti-ZDHHC5 (IP:21324-1-AP, 4ug; Detection:21324-1-AP 1:500) with HEK-293 cells lysate 1680 ug.



1X10<sup>6</sup> HeLa cells were intracellularly stained with 0.4 ug Anti-Human ZDHHC5 (21324-1-AP) and CoraLite@488-Conjugated AffiniPure Goat Anti-Rabbit IgG(H+L) at dilution 1:1000 (red), or 0.4 ug Control Antibody. Cells were fixed with 4% PFA and permeabilized with Flow Cytometry Perm Buffer (PF00011-C).