

For Research Use Only

Cathepsin D Polyclonal antibody

Catalog Number: 21327-1-AP

Featured Product

97 Publications



Basic Information

Catalog Number: 21327-1-AP	GenBank Accession Number: BC016320	Purification Method: Antigen affinity purification
Size: 150ul , Concentration: 600 µg/ml by Nanodrop;	GeneID (NCBI): 1509	Recommended Dilutions: WB 1:5000-1:50000 IHC 1:500-1:2000
Source: Rabbit	Full Name: cathepsin D	
Isotype: IgG	Calculated MW: 412 aa, 45 kDa	
Immunogen Catalog Number: AG15254	Observed MW: 32 kDa, 48 kDa, 52 kDa	

Applications

Tested Applications: IHC, WB, ELISA	Positive Controls: WB : A375 cells, HuH-7 cells, MCF-7 cells, HepG2 cells IHC : human hepatocirrhosis tissue,
Cited Applications: IF, IHC, WB	
Species Specificity: human, mouse, rat	
Cited Species: human, rat, mouse, pig, Bovine	

Note-IHC: suggested antigen retrieval with TE buffer pH 9.0; (*) Alternatively, antigen retrieval may be performed with citrate buffer pH 6.0

Background Information

CTSD (Cathepsin D) also named CPSD, belongs to the peptidase A1 family. It is ubiquitously expressed and is involved in proteolytic degradation, cell invasion, and apoptosis. Human CTSD is synthesized as a 52-kDa precursor that is converted into an active 48-kDa single-chain intermediate in the endosomes, and then into a fully active mature form, composed of a 34-kDa heavy chain and a 14-kDa light chain, in the lysosomes. It is a lysosomal acid protease found in neutrophils and monocytes and involved in the pathogenesis of several diseases such as breast cancer and possibly Alzheimer disease. (PMID: 27114232, PMID: 30717773, PMID: 30051532)

Notable Publications

Author	Pubmed ID	Journal	Application
Yang Yang	32962728	J Exp Clin Cancer Res	WB
Yong Fan	34560177	Food Chem Toxicol	WB
Haojie Zhang	36114802	Phytother Res	WB

Storage

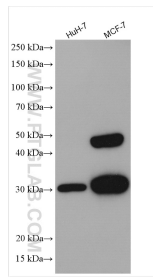
Storage:
Store at -20°C. Stable for one year after shipment.
Storage Buffer:
PBS with 0.02% sodium azide and 50% glycerol pH 7.3.
Aliquoting is unnecessary for -20°C storage

*** 20ul sizes contain 0.1% BSA

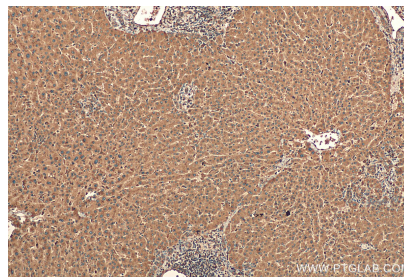
For technical support and original validation data for this product please contact:
T: 1 (888) 4PTGLAB (1-888-478-4522) (toll free in USA), or 1(312) 455-8498 (outside USA)
E: proteintech@ptglab.com
W: ptglab.com

This product is exclusively available under Proteintech Group brand and is not available to purchase from any other manufacturer.

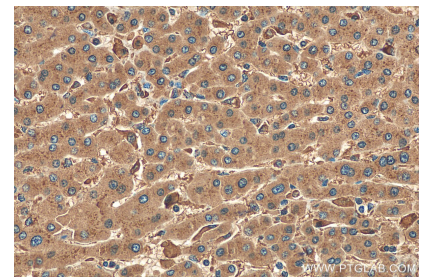
Selected Validation Data



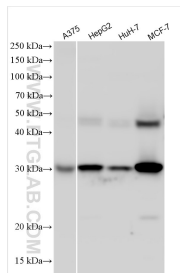
Various lysates were subjected to SDS PAGE followed by western blot with 21327-1-AP (Cathepsin D antibody) at dilution of 1:8000 incubated at room temperature for 1.5 hours.



Immunohistochemical analysis of paraffin-embedded human hepatocirrhosis tissue slide using 21327-1-AP (Cathepsin D antibody) at dilution of 1:1000 (under 10x lens). Heat mediated antigen retrieval with Tris-EDTA buffer (pH 9.0).



Immunohistochemical analysis of paraffin-embedded human hepatocirrhosis tissue slide using 21327-1-AP (Cathepsin D antibody) at dilution of 1:1000 (under 40x lens). Heat mediated antigen retrieval with Tris-EDTA buffer (pH 9.0).



Various lysates were subjected to SDS PAGE followed by western blot with 21327-1-AP (Cathepsin D antibody) at dilution of 1:10000 incubated at room temperature for 1.5 hours.