

For Research Use Only

C9orf7 / CACFD1 Polyclonal antibody



Catalog Number: 21330-1-AP

Basic Information

Catalog Number: 21330-1-AP	GenBank Accession Number: BC030558	Purification Method: Antigen affinity purification
Size: 150ul , Concentration: 400 µg/ml by Nanodrop;	GeneID (NCBI): 11094	Recommended Dilutions: WB 1:500-1:2000
Source: Rabbit	Full Name: chromosome 9 open reading frame 7	
Isotype: IgG	Calculated MW: 172 aa, 18 kDa	
Immunogen Catalog Number: AG15336	Observed MW: ~25 kDa	

Applications

Tested Applications: WB, ELISA	Positive Controls: WB : mouse testis tissue,
Species Specificity: human, mouse, rat	

Background Information

Calcium Channel Flower Domain Containing 1 (CACFD1) also named as C9orf7 or human Flower protein (hFWE). In *Drosophila*, cell selection uses a cell selection mechanism based on 'fitness fingerprints', which allow it to delay ageing, prevent developmental malformations and replace old tissues during regeneration. At the molecular level, these fitness fingerprints consist of combinations of Flower membrane proteins. Proteins that indicate reduced fitness are called Flower-Lose, because they are expressed in cells marked to be eliminated. It has different isoforms, the calculated MW rang from 14-25 kDa. 21330-1-AP can detect a band around 25 kDa.(PMID:31341286)

Storage

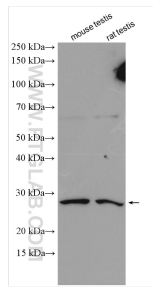
Storage:
Store at -20°C. Stable for one year after shipment.
Storage Buffer:
PBS with 0.02% sodium azide and 50% glycerol pH 7.3.
Aliquoting is unnecessary for -20°C storage

*** 20ul sizes contain 0.1% BSA

For technical support and original validation data for this product please contact:
T: 1 (888) 4PTGLAB (1-888-478-4522) (toll free in USA), or 1(312) 455-8498 (outside USA)
E: proteintech@ptglab.com
W: ptglab.com

This product is exclusively available under Proteintech Group brand and is not available to purchase from any other manufacturer.

Selected Validation Data



Various lysates were subjected to SDS PAGE followed by western blot with 21330-1-AP (C9orf7 antibody) at dilution of 1:1000 incubated at room temperature for 1.5 hours.