

For Research Use Only

# YLPM1 Polyclonal antibody

Catalog Number: 21332-1-AP



## Basic Information

**Catalog Number:**

21332-1-AP

**Size:**

150ul, Concentration: 500 ug/ml by Nanodrop;

**Source:**

Rabbit

**Isotype:**

IgG

**Immunogen Catalog Number:**

AG15408

**GenBank Accession Number:**

BC023570

**GeneID (NCBI):**

56252

**UNIPROT ID:**

P49750

**Full Name:**

YLP motif containing 1

**Calculated MW:**

1951 aa, 220 kDa

**Observed MW:**

200 kDa, 250 kDa

**Purification Method:**

Antigen affinity purification

**Recommended Dilutions:**

IP: 0.5-4.0 ug for 1.0-3.0 mg of total protein lysate

IF/ICC: 1:250-1:1000

## Applications

**Tested Applications:**

IF/ICC, IP, ELISA

**Species Specificity:**

human, mouse

**Positive Controls:**

IP: Neuro-2a cells,

IF/ICC: SH-SY5Y cells,

## Storage

**Storage:**

Store at -20°C. Stable for one year after shipment.

**Storage Buffer:**

PBS with 0.02% sodium azide and 50% glycerol, pH7.3

Aliquoting is unnecessary for -20°C storage

**\*\*\* 20ul sizes contain 0.1% BSA**

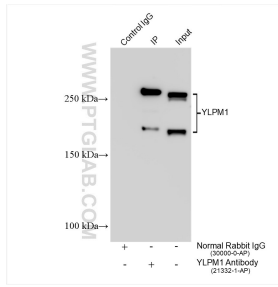
For technical support and original validation data for this product please contact:

T: 1 (888) 4PTGLAB (1-888-478-4522) (toll free in USA), or 1(312) 455-8498 (outside USA)

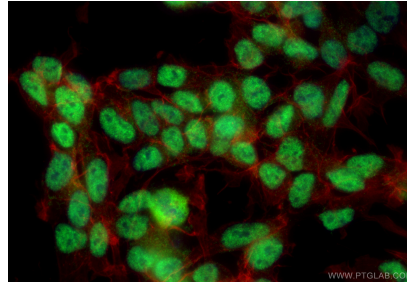
E: [proteintech@ptglab.com](mailto:proteintech@ptglab.com)  
W: [ptglab.com](http://ptglab.com)

**This product is exclusively available under Proteintech Group brand and is not available to purchase from any other manufacturer.**

## Selected Validation Data



IP result of anti-YLPM1 (IP:21332-1-AP, 4ug;  
Detection:21332-1-AP 1:1000) with Neuro-2a cells  
lysate 1440 ug.



Immunofluorescent analysis of (4% PFA) fixed SH-SY5Y cells using YLPM1 antibody (21332-1-AP) at dilution of 1:500 and CoraLite@488-Conjugated Goat Anti-Rabbit IgG(H+L) (SA00013-2), CL594-Phalloidin (red).