

For Research Use Only

YLPM1 Polyclonal antibody, PBS Only

Catalog Number: 21332-1-PBS



Basic Information

Catalog Number: 21332-1-PBS	GenBank Accession Number: BC023570	Purification Method: Antigen affinity purification
Size: 100ug, Concentration: 1 mg/ml by Nanodrop;	GeneID (NCBI): 56252	
Source: Rabbit	UNIPROT ID: P49750	
Isotype: IgG	Full Name: YLP motif containing 1	
Immunogen Catalog Number: AG15408	Calculated MW: 1951 aa, 220 kDa	
	Observed MW: 200 kDa, 250-290 kDa	

Applications

Tested Applications:
WB, IF/ICC, IP, Indirect ELISA

Species Specificity:
human, mouse, rat

Background Information

YLPM1 also known as ZAP3, ZAP113, or C14orf170. YLPM1 plays a critical role in the regulation of telomerase activity and transcriptional repression. The molecular weight of the human YLPM1 protein is approximately 250-300 kDa, with a shorter isoform about 200 kDa.

Storage

Storage:
Store at -80°C.

Storage Buffer:
PBS only, pH7.3

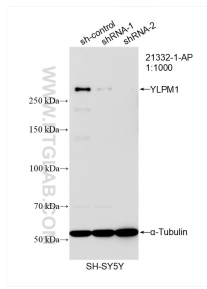
For technical support and original validation data for this product please contact:

T: 1 (888) 4PTGLAB (1-888-478-4522) (toll free in USA), or 1(312) 455-8498 (outside USA)

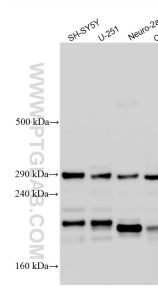
E: proteintech@ptglab.com
W: ptglab.com

This product is exclusively available under Proteintech Group brand and is not available to purchase from any other manufacturer.

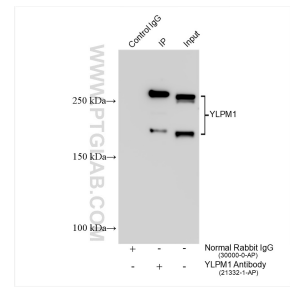
Selected Validation Data



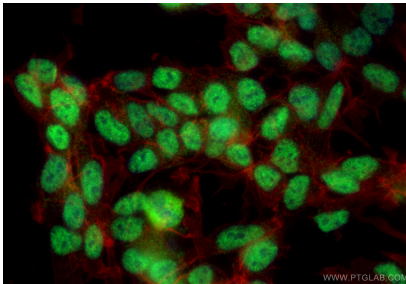
WB result of YLPM1 antibody (21332-1-AP; 1:1000; incubated at room temperature for 1.5 hours) with sh-Control and sh-YLPM1 transfected SH-SY5Y cells. This data was developed using the same antibody clone with 21332-1-PBS in a different storage buffer formulation.



Various lysates were subjected to SDS PAGE followed by western blot with 21332-1-AP (YLPM1 antibody) at dilution of 1:1000 incubated at room temperature for 1.5 hours. This data was developed using the same antibody clone with 21332-1-PBS in a different storage buffer formulation.



IP result of anti-YLPM1 (IP:21332-1-AP, 4ug; Detection:21332-1-AP 1:1000) with Neuro-2a cells lysate 1440 ug. This data was developed using the same antibody clone with 21332-1-PBS in a different storage buffer formulation.



Immunofluorescent analysis of (4% PFA) fixed SH-SY5Y cells using YLPM1 antibody (21332-1-AP) at dilution of 1:500 and CoraLite®488-Conjugated Goat Anti-Rabbit IgG(H+L) (SA00013-2), CL594-Phalloidin (red). This data was developed using the same antibody clone with 21332-1-PBS in a different storage buffer formulation.