

For Research Use Only

CHD2 Polyclonal antibody

Catalog Number: 21334-1-AP

Featured Product



Basic Information

Catalog Number:

21334-1-AP

Size:

150ul, Concentration: 600 ug/ml by Nanodrop;

Source:

Rabbit

Isotype:

IgG

Immunogen Catalog Number:

AG15429

GenBank Accession Number:

BC020810

GeneID (NCBI):

1106

UNIPROT ID:

O14647

Full Name:

chromodomain helicase DNA binding protein 2

Calculated MW:

1828 aa, 211 kDa

Observed MW:

230-250 kDa

Purification Method:

Antigen affinity purification

Recommended Dilutions:

WB 1:1000-1:8000

IHC 1:50-1:500

IF/ICC 1:200-1:800

Applications

Tested Applications:

WB, IHC, IF/ICC, ELISA

Species Specificity:

human, rat

Note-IHC: suggested antigen retrieval with TE buffer pH 9.0; (*) Alternatively, antigen retrieval may be performed with citrate buffer pH 6.0

Positive Controls:

WB : HEK-293 cells, Jurkat cells, K-562 cells

IHC : rat brain tissue, mouse testis tissue

IF/ICC : HeLa cells,

Background Information

Chromodomain helicase DNA binding protein 2 (CHD2), a member of the sucrose nonfermenting (SNF-2) protein family of epigenetic regulators, which use the energy from ATP hydrolysis to change nucleosome positioning, composition and chromatin structure (PMID: 33435571). CHD2 protein plays a critical role in embryonic development, tumor suppression and survival (PMID: 24834135). In addition, CHD2 has been proposed to prevent breast cancer initiation, and CHD2 mutations are associated with chronic lymphocytic leukemia.

Storage

Storage:

Store at -20°C. Stable for one year after shipment.

Storage Buffer:

PBS with 0.02% sodium azide and 50% glycerol pH 7.3.

Aliquoting is unnecessary for -20°C storage

*** 20ul sizes contain 0.1% BSA

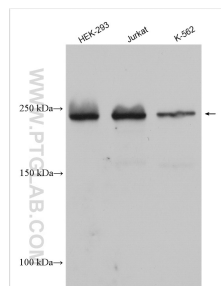
For technical support and original validation data for this product please contact:

T: 1 (888) 4PTGLAB (1-888-478-4522) (toll free in USA), or 1(312) 455-8498 (outside USA)

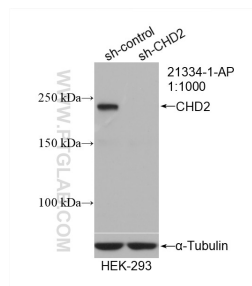
E: proteintech@ptglab.com
W: ptglab.com

This product is exclusively available under Proteintech Group brand and is not available to purchase from any other manufacturer.

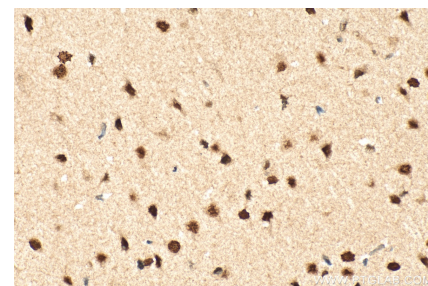
Selected Validation Data



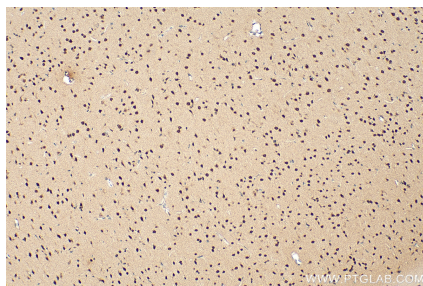
Various lysates were subjected to SDS PAGE followed by western blot with 21334-1-AP (CHD2 antibody) at dilution of 1:4000 incubated at room temperature for 1.5 hours.



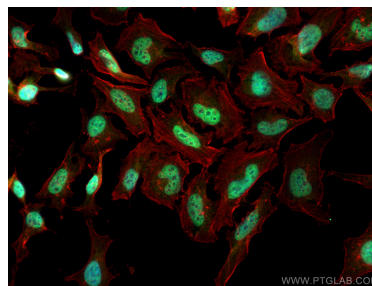
WB result of CHD2 antibody (21334-1-AP; 1:1000; incubated at room temperature for 1.5 hours) with sh-Control and sh-CHD2 transfected HEK-293 cells.



Immunohistochemical analysis of paraffin-embedded rat brain tissue slide using 21334-1-AP (CHD2 antibody) at dilution of 1:200 (under 40x lens). Heat mediated antigen retrieval with Tris-EDTA buffer (pH 9.0).



Immunohistochemical analysis of paraffin-embedded rat brain tissue slide using 21334-1-AP (CHD2 antibody) at dilution of 1:200 (under 10x lens). Heat mediated antigen retrieval with Tris-EDTA buffer (pH 9.0).



Immunofluorescent analysis of (4% PFA) fixed HeLa cells using CHD2 antibody (21334-1-AP) at dilution of 1:400 and CoraLite®488-Conjugated AffiniPure Goat Anti-Rabbit IgG(H+L), CL594-Phalloidin (red).