

For Research Use Only

# CHD2 Polyclonal antibody, PBS Only

Catalog Number: 21334-1-PBS

Featured Product



## Basic Information

**Catalog Number:**

21334-1-PBS

**Size:**

100ug, Concentration: 1 mg/ml by Nanodrop;

**Source:**

Rabbit

**Isotype:**

IgG

**Immunogen Catalog Number:**

AG15429

**GenBank Accession Number:**

BC020810

**GeneID (NCBI):**

1106

**UNIPROT ID:**

O14647

**Full Name:**

chromodomain helicase DNA binding protein 2

**Calculated MW:**

1828 aa, 211 kDa

**Observed MW:**

230-250 kDa

**Purification Method:**

Antigen affinity purification

## Applications

**Tested Applications:**

WB, IHC, IF/ICC, Indirect ELISA

**Species Specificity:**

human, rat

## Background Information

Chromodomain helicase DNA binding protein 2 (CHD2), a member of the sucrose nonfermenting (SNF-2) protein family of epigenetic regulators, which use the energy from ATP hydrolysis to change nucleosome positioning, composition and chromatin structure (PMID: 33435571). CHD2 protein plays a critical role in embryonic development, tumor suppression and survival (PMID: 24834135). In addition, CHD2 has been proposed to prevent breast cancer initiation, and CHD2 mutations are associated with chronic lymphocytic leukemia.

## Storage

**Storage:**

Store at -80°C.

**Storage Buffer:**

PBS only, pH7.3

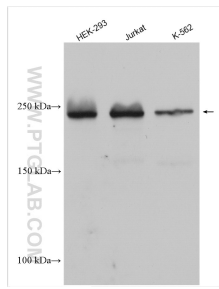
For technical support and original validation data for this product please contact:

T: 1 (888) 4PTGLAB (1-888-478-4522) (toll free in USA), or 1(312) 455-8498 (outside USA)

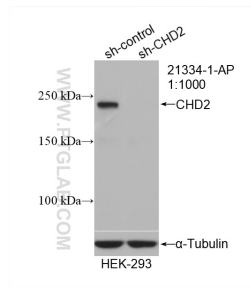
E: [proteintech@ptglab.com](mailto:proteintech@ptglab.com)  
W: [ptglab.com](http://ptglab.com)

This product is exclusively available under Proteintech Group brand and is not available to purchase from any other manufacturer.

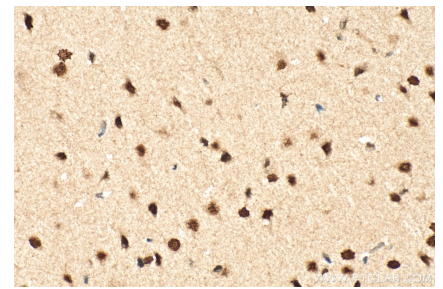
## Selected Validation Data



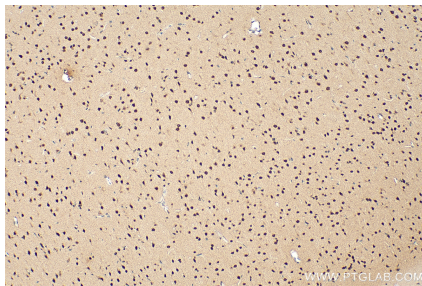
Various lysates were subjected to SDS PAGE followed by western blot with 21334-1-AP (CHD2 antibody) at dilution of 1:4000 incubated at room temperature for 1.5 hours. This data was developed using the same antibody clone with 21334-1-PBS in a different storage buffer formulation.



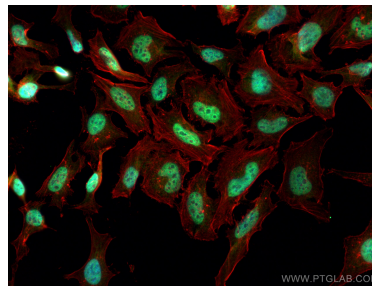
WB result of CHD2 antibody (21334-1-AP; 1:1000; incubated at room temperature for 1.5 hours) with sh-Control and sh-CHD2 transfected HEK-293 cells. This data was developed using the same antibody clone with 21334-1-PBS in a different storage buffer formulation.



Immunohistochemical analysis of paraffin-embedded rat brain tissue slide using 21334-1-AP (CHD2 antibody) at dilution of 1:200 (under 40x lens). Heat mediated antigen retrieval with Tris-EDTA buffer (pH 9.0). This data was developed using the same antibody clone with 21334-1-PBS in a different storage buffer formulation.



Immunohistochemical analysis of paraffin-embedded rat brain tissue slide using 21334-1-AP (CHD2 antibody) at dilution of 1:200 (under 10x lens). Heat mediated antigen retrieval with Tris-EDTA buffer (pH 9.0). This data was developed using the same antibody clone with 21334-1-PBS in a different storage buffer formulation.



Immunofluorescent analysis of (4% PFA) fixed HeLa cells using CHD2 antibody (21334-1-AP) at dilution of 1:400 and CoraLite@488-Conjugated AffiniPure Goat Anti-Rabbit IgG(H+L), CL594-Phalloidin (red). This data was developed using the same antibody clone with 21334-1-PBS in a different storage buffer formulation.