

For Research Use Only

# SLC36A2 Polyclonal antibody

Catalog Number: 21352-1-AP



## Basic Information

### Catalog Number:

21352-1-AP

### Size:

150ul, Concentration: 750 ug/ml by Nanodrop;

### Source:

Rabbit

### Isotype:

IgG

### Immunogen Catalog Number:

AG15742

### GenBank Accession Number:

BC101101

### GeneID (NCBI):

153201

### UNIPROT ID:

Q495M3

### Full Name:

solute carrier family 36 (proton/amino acid symporter), member 2

### Calculated MW:

483 aa, 53 kDa

### Observed MW:

53-60 kDa

### Purification Method:

Antigen affinity purification

### Recommended Dilutions:

WB 1:500-1:3000

## Applications

### Tested Applications:

WB, ELISA

### Species Specificity:

human, Mouse, Rat

### Positive Controls:

WB : mouse kidney tissue, rat kidney tissue

## Background Information

SLC36A2 encodes proton-coupled amino acid transporter 2 (PAT2), a high-affinity cotransporter of glycine and proline coupled with the uptake of a proton in kidney and muscles. The inactivation or reduced function of SLC36A2 is the predominant determinant of the inherited iminoglycinuria phenotype in humans.

## Storage

### Storage:

Store at -20°C. Stable for one year after shipment.

### Storage Buffer:

PBS with 0.02% sodium azide and 50% glycerol pH 7.3.

Aliquoting is unnecessary for -20°C storage

\*\*\* 20ul sizes contain 0.1% BSA

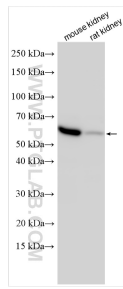
For technical support and original validation data for this product please contact:

T: 1 (888) 4PTGLAB (1-888-478-4522) (toll free in USA), or 1(312) 455-8498 (outside USA)

E: [proteintech@ptglab.com](mailto:proteintech@ptglab.com)  
W: [ptglab.com](http://ptglab.com)

This product is exclusively available under Proteintech Group brand and is not available to purchase from any other manufacturer.

## Selected Validation Data



Various lysates were subjected to SDS PAGE followed by western blot with 21352-1-AP (SLC36A2 antibody) at dilution of 1:1500 incubated at room temperature for 1.5 hours.