

For Research Use Only

TMEM195 Polyclonal antibody

Catalog Number: 21355-1-AP

2 Publications



Basic Information

Catalog Number:

21355-1-AP

Size:

150ul, Concentration: 550 ug/ml by Nanodrop and 333 ug/ml by Bradford method using BSA as the standard;

Source:

Rabbit

Isotype:

IgG

Immunogen Catalog Number:

AG15774

GenBank Accession Number:

BC108676

GeneID (NCBI):

392636

UNIPROT ID:

Q6ZNB7

Full Name:

transmembrane protein 195

Calculated MW:

445 aa, 52 kDa

Observed MW:

52 kDa

Purification Method:

Antigen affinity purification

Recommended Dilutions:

WB 1:500-1:1000

IHC 1:100-1:400

Applications

Tested Applications:

WB, IHC, ELISA

Cited Applications:

WB

Species Specificity:

human, mouse

Cited Species:

human

Note-IHC: suggested antigen retrieval with TE buffer pH 9.0; (*) Alternatively, antigen retrieval may be performed with citrate buffer pH 6.0

Positive Controls:

WB : HepG2 cells, L02 cells, MCF-7 cells, mouse liver tissue

IHC : human liver tissue, human liver cancer tissue

Notable Publications

Author	Pubmed ID	Journal	Application
Volkan Okur	31555905	Hum Genet	WB
Katrin Watschinger	29741738	J Infect Dis	WB

Storage

Storage:

Store at -20°C. Stable for one year after shipment.

Storage Buffer:

PBS with 0.02% sodium azide and 50% glycerol pH 7.3.

Aliquoting is unnecessary for -20°C storage

*** 20ul sizes contain 0.1% BSA

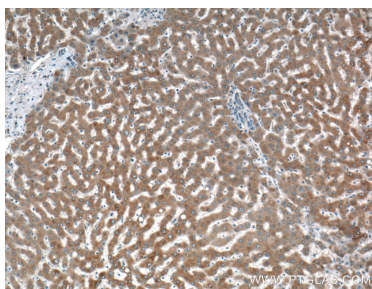
For technical support and original validation data for this product please contact:

T: 1 (888) 4PTGLAB (1-888-478-4522) (toll free in USA), or 1(312) 455-8498 (outside USA)

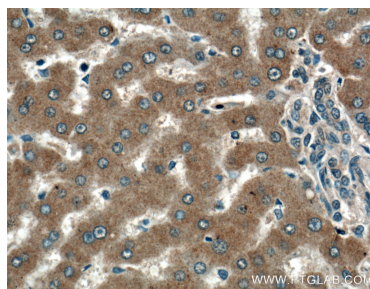
E: proteintech@ptglab.com
W: ptglab.com

This product is exclusively available under Proteintech Group brand and is not available to purchase from any other manufacturer.

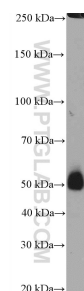
Selected Validation Data



Immunohistochemical analysis of paraffin-embedded human liver tissue slide using 21355-1-AP (TMEM195 antibody) at dilution of 1:200 (under 10x lens).



Immunohistochemical analysis of paraffin-embedded human liver tissue slide using 21355-1-AP (TMEM195 antibody) at dilution of 1:200 (under 40x lens).



HepG2 cells were subjected to SDS PAGE followed by western blot with 21355-1-AP (TMEM195 antibody) at dilution of 1:600 incubated at room temperature for 1.5 hours.