

For Research Use Only

C21orf66 Polyclonal antibody

Catalog Number: 21357-1-AP

1 Publications



Basic Information

Catalog Number: 21357-1-AP	GenBank Accession Number: BC030539	Purification Method: Antigen affinity purification
Size: 150ul , Concentration: 600 µg/ml by Nanodrop and 580 µg/ml by Bradford method using BSA as the standard;	GeneID (NCBI): 94104	Recommended Dilutions: WB 1:1000-1:4000 IF 1:10-1:100
Source: Rabbit	Full Name: chromosome 21 open reading frame 66	
Isotype: IgG	Calculated MW: 917 aa, 105 kDa	
Immunogen Catalog Number: AG15789	Observed MW: 93 kDa	

Applications

Tested Applications: IF, WB, ELISA	Positive Controls: WB : human brain tissue, IF : HeLa cells,
Cited Applications: WB	
Species Specificity: human, mouse, rat	
Cited Species: mouse	

Background Information

Notable Publications

Author	Pubmed ID	Journal	Application
Wenting Li	37404821	Front Immunol	WB

Storage

Storage:
Store at -20°C. Stable for one year after shipment.
Storage Buffer:
PBS with 0.02% sodium azide and 50% glycerol pH 7.3.
Aliquoting is unnecessary for -20°C storage

*** 20ul sizes contain 0.1% BSA

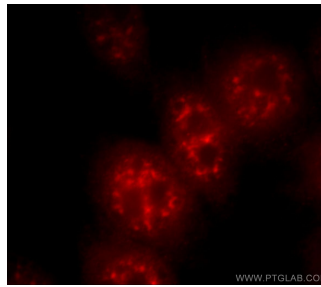
For technical support and original validation data for this product please contact:
T: 1 (888) 4PTGLAB (1-888-478-4522) (toll free in USA), or 1(312) 455-8498 (outside USA)
E: proteintech@ptglab.com
W: ptglab.com

This product is exclusively available under Proteintech Group brand and is not available to purchase from any other manufacturer.

Selected Validation Data



human brain tissue were subjected to SDS PAGE followed by western blot with 21357-1-AP (C21orf66 antibody) at dilution of 1:2000 incubated at room temperature for 1.5 hours.



Immunofluorescent analysis of HeLa cells, using C21orf66 antibody 21357-1-AP at 1:25 dilution and Rhodamine-labeled goat anti-rabbit IgG (red).