

For Research Use Only

C21orf66 Polyclonal antibody, PBS Only

Catalog Number: 21357-1-PBS



Basic Information

Catalog Number:

21357-1-PBS

Size:

100ug, Concentration: 1 mg/ml by Nanodrop;

Source:

Rabbit

Isotype:

IgG

Immunogen Catalog Number:

AG15789

GenBank Accession Number:

BC030539

GeneID (NCBI):

94104

UNIPROT ID:

Q9Y5B6

Full Name:

chromosome 21 open reading frame 66

Calculated MW:

917 aa, 105 kDa

Observed MW:

93 kDa

Purification Method:

Antigen affinity purification

Applications

Tested Applications:

WB, IHC, IF/ICC, Indirect ELISA

Species Specificity:

human, mouse, rat

Storage

Storage:

Store at -80°C.

Storage Buffer:

PBS Only

For technical support and original validation data for this product please contact:

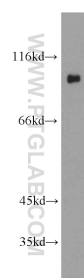
T: 1 (888) 4PTGLAB (1-888-478-4522) (toll free in USA), or 1(312) 455-8498 (outside USA)

E: proteintech@ptglab.com

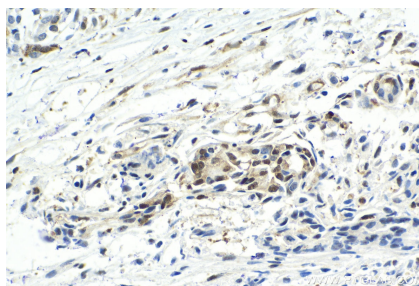
W: ptglab.com

This product is exclusively available under Proteintech Group brand and is not available to purchase from any other manufacturer.

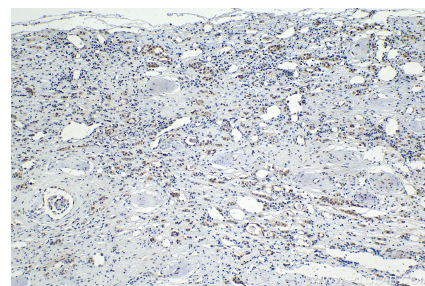
Selected Validation Data



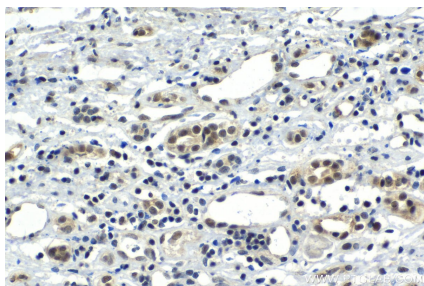
human brain tissue were subjected to SDS PAGE followed by western blot with 21357-1-AP (C21orf66 antibody) at dilution of 1:2000 incubated at room temperature for 1.5 hours. This data was developed using the same antibody clone with 21357-1-PBS in a different storage buffer formulation.



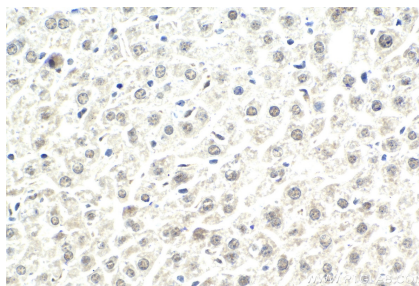
Immunohistochemical analysis of paraffin-embedded human pancreas cancer tissue slide using 21357-1-AP (C21orf66 antibody) at dilution of 1:500 (under 40x lens). Heat mediated antigen retrieval with Tris-EDTA buffer (pH 9.0). This data was developed using the same antibody clone with 21357-1-PBS in a different storage buffer formulation.



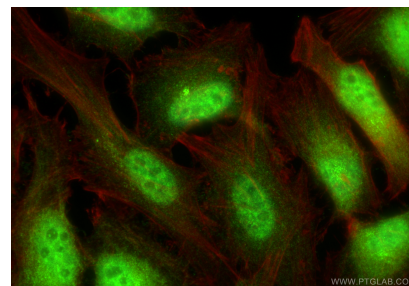
Immunohistochemical analysis of paraffin-embedded human renal cell carcinoma tissue slide using 21357-1-AP (C21orf66 antibody) at dilution of 1:500 (under 10x lens). Heat mediated antigen retrieval with Tris-EDTA buffer (pH 9.0). This data was developed using the same antibody clone with 21357-1-PBS in a different storage buffer formulation.



Immunohistochemical analysis of paraffin-embedded human renal cell carcinoma tissue slide using 21357-1-AP (C21orf66 antibody) at dilution of 1:500 (under 40x lens). Heat mediated antigen retrieval with Tris-EDTA buffer (pH 9.0). This data was developed using the same antibody clone with 21357-1-PBS in a different storage buffer formulation.



Immunohistochemical analysis of paraffin-embedded mouse liver tissue slide using 21357-1-AP (C21orf66 antibody) at dilution of 1:500 (under 40x lens). Heat mediated antigen retrieval with Tris-EDTA buffer (pH 9.0). This data was developed using the same antibody clone with 21357-1-PBS in a different storage buffer formulation.



Immunofluorescent analysis of (4% PFA) fixed HeLa cells using C21orf66 antibody (21357-1-AP) at dilution of 1:400 and CoraLite®488-Conjugated Goat Anti-Rabbit IgG(H+L) (SA00013-2), CL594-Phalloidin (red). This data was developed using the same antibody clone with 21357-1-PBS in a different storage buffer formulation.