

For Research Use Only

ITGB1BP2 Polyclonal antibody

Catalog Number: 21359-1-AP



Basic Information

Catalog Number:

21359-1-AP

Size:

150ul , Concentration: 240 ug/ml by Nanodrop and 180 ug/ml by Bradford method using BSA as the standard;

Source:

Rabbit

Isotype:

IgG

Immunogen Catalog Number:

AG15808

GenBank Accession Number:

BC108901

GeneID (NCBI):

26548

UNIPROT ID:

Q9UKP3

Full Name:

integrin beta 1 binding protein (melusin) 2

Calculated MW:

347 aa, 38 kDa

Observed MW:

40-45 kDa

Purification Method:

Antigen affinity purification

Recommended Dilutions:

WB 1:500-1:1000

IF/ICC 1:10-1:100

Applications

Tested Applications:

WB, IF/ICC, ELISA

Species Specificity:

human, mouse, rat

Positive Controls:

WB : human heart tissue,

IF/ICC : HepG2 cells,

Storage

Storage:

Store at -20°C. Stable for one year after shipment.

Storage Buffer:

PBS with 0.02% sodium azide and 50% glycerol pH 7.3.

Aliquoting is unnecessary for -20°C storage

*** 20ul sizes contain 0.1% BSA

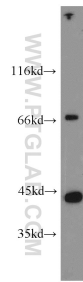
For technical support and original validation data for this product please contact:

T: 1 (888) 4PTGLAB (1-888-478-4522) (toll free in USA), or 1(312) 455-8498 (outside USA)

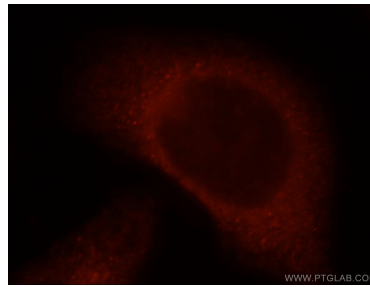
E: proteintech@ptglab.com
W: ptglab.com

This product is exclusively available under Proteintech Group brand and is not available to purchase from any other manufacturer.

Selected Validation Data



human heart tissue were subjected to SDS PAGE followed by western blot with 21359-1-AP (ITGB1BP2 antibody) at dilution of 1:600 incubated at room temperature for 1.5 hours.



Immunofluorescent analysis of HepG2 cells, using ITGB1BP2 antibody 21359-1-AP at 1:25 dilution and Rhodamine-labeled goat anti-rabbit IgG (red).