

For Research Use Only

ASCL2 Polyclonal antibody

Catalog Number: 21368-1-AP



Basic Information

Catalog Number: 21368-1-AP	GenBank Accession Number: BC057801	Purification Method: Antigen affinity purification
Size: 150ul , Concentration: 550 µg/ml by Nanodrop;	GeneID (NCBI): 430	Recommended Dilutions: WB 1:500-1:1000
Source: Rabbit	Full Name: achaete-scute complex homolog 2 (Drosophila)	
Isotype: IgG	Calculated MW: 193 aa, 20 kDa	
Immunogen Catalog Number: AG15839	Observed MW: 20 kDa	

Applications

Tested Applications:

WB, ELISA

Species Specificity:

human

Positive Controls:

WB : MKN-45 cells, Caco-2 cells

Background Information

Achaete-scute complex homolog 2 (Drosophila), also known as ASCL2, is an imprinted human gene. This gene is involved in the determination of the neuronal precursors in the peripheral nervous system and the central nervous system, particularly important during implantation of the developing embryo, specifically in placental development and neuronal precursor determination. ASCL2 has been reported involved in tumor progression, being upregulated in colorectal tumors, and involvement in metastasis could be attributed to ASCL2-promoted cellular self-renewal as opposed to cellular differentiation (PMID: 30096149 16568095).

Storage

Storage:

Store at -20°C. Stable for one year after shipment.

Storage Buffer:

PBS with 0.02% sodium azide and 50% glycerol pH 7.3.

Aliquoting is unnecessary for -20°C storage

*** 20ul sizes contain 0.1% BSA

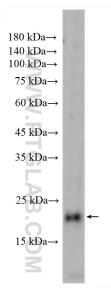
For technical support and original validation data for this product please contact:

T: 1 (888) 4PTGLAB (1-888-478-4522) (toll free in USA), or 1(312) 455-8498 (outside USA)

E: proteintech@ptglab.com
W: ptglab.com

This product is exclusively available under Proteintech Group brand and is not available to purchase from any other manufacturer.

Selected Validation Data



MKN-45 cells were subjected to SDS PAGE followed by western blot with 21368-1-AP (ASCL2 antibody) at dilution of 1:500 incubated at room temperature for 1.5 hours.