

For Research Use Only

PLCB3 Polyclonal antibody

Catalog Number: 21370-1-AP



Basic Information

Catalog Number:

21370-1-AP

Size:

150ul, Concentration: 500 ug/ml by Nanodrop and 367 ug/ml by Bradford method using BSA as the standard;

Source:

Rabbit

Isotype:

IgG

Immunogen Catalog Number:

AG15845

GenBank Accession Number:

BC142681

GeneID (NCBI):

5331

UNIPROT ID:

Q01970

Full Name:

phospholipase C, beta 3
(phosphatidylinositol-specific)

Calculated MW:

1234 aa, 139 kDa

Observed MW:

150 kDa

Purification Method:

Antigen affinity purification

Recommended Dilutions:

WB 1:500-1:1000

IHC 1:50-1:500

Applications

Tested Applications:

WB, IHC, ELISA

Species Specificity:

human, mouse

Note-IHC: suggested antigen retrieval with TE buffer pH 9.0; (*) Alternatively, antigen retrieval may be performed with citrate buffer pH 6.0

Positive Controls:

WB : MCF-7 cells, A431 cells, COLO 320 cells, HEK-293T cells, NIH/3T3 cells

IHC : human colon tissue,

Storage

Storage:

Store at -20°C. Stable for one year after shipment.

Storage Buffer:

PBS with 0.02% sodium azide and 50% glycerol pH 7.3.

Aliquoting is unnecessary for -20°C storage

*** 20ul sizes contain 0.1% BSA

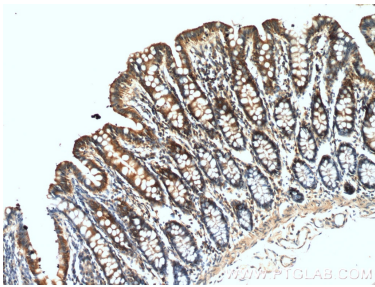
For technical support and original validation data for this product please contact:

T: 1 (888) 4PTGLAB (1-888-478-4522) (toll free in USA), or 1(312) 455-8498 (outside USA)

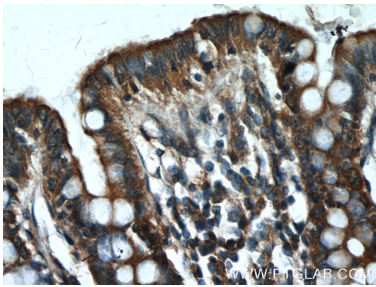
E: proteintech@ptglab.com
W: ptglab.com

This product is exclusively available under Proteintech Group brand and is not available to purchase from any other manufacturer.

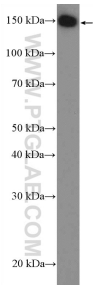
Selected Validation Data



Immunohistochemical analysis of paraffin-embedded human colon tissue slide using 21370-1-AP (PLCB3 Antibody) at dilution of 1:200 (under 10x lens).



Immunohistochemical analysis of paraffin-embedded human colon tissue slide using 21370-1-AP (PLCB3 Antibody) at dilution of 1:200 (under 40x lens).



MCF-7 cells were subjected to SDS PAGE followed by western blot with 21370-1-AP (PLCB3 Antibody) at dilution of 1:600 incubated at room temperature for 1.5 hours.