

For Research Use Only

# PKIG Polyclonal antibody, PBS Only

Catalog Number: 21371-1-PBS



## Basic Information

**Catalog Number:**

21371-1-PBS

**Size:**

100ug, Concentration: 1 mg/ml by Nanodrop;

**Source:**

Rabbit

**Isotype:**

IgG

**Immunogen Catalog Number:**

AG15878

**GenBank Accession Number:**

BC104257

**GeneID (NCBI):**

11142

**UNIPROT ID:**

Q9Y2B9

**Full Name:**

protein kinase (cAMP-dependent, catalytic) inhibitor gamma

**Calculated MW:**

76 aa, 8 kDa

**Observed MW:**

5-8 kDa

**Purification Method:**

Antigen affinity purification

## Applications

**Tested Applications:**

WB, IF/ICC, Indirect ELISA

**Species Specificity:**

human, mouse, rat

## Storage

**Storage:**

Store at -80°C.

**Storage Buffer:**

PBS only, pH7.3

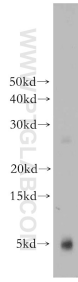
For technical support and original validation data for this product please contact:

T: 1 (888) 4PTGLAB (1-888-478-4522) (toll free in USA), or 1(312) 455-8498 (outside USA)

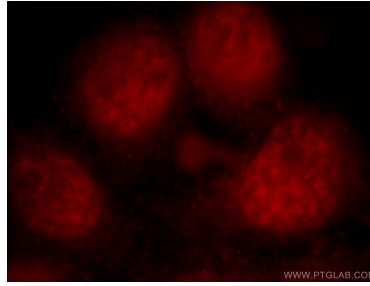
E: [proteintech@ptglab.com](mailto:proteintech@ptglab.com)  
W: [ptglab.com](http://ptglab.com)

This product is exclusively available under Proteintech Group brand and is not available to purchase from any other manufacturer.

## Selected Validation Data



mouse heart tissue were subjected to SDS PAGE followed by western blot with 21371-1-AP (PKIG antibody) at dilution of 1:200 incubated at room temperature for 1.5 hours. This data was developed using the same antibody clone with 21371-1-PBS in a different storage buffer formulation.



Immunofluorescent analysis of HeLa cells, using PKIG antibody 21371-1-AP at 1:25 dilution and Rhodamine-labeled goat anti-rabbit IgG (red). This data was developed using the same antibody clone with 21371-1-PBS in a different storage buffer formulation.