

For Research Use Only

ECM2 Polyclonal antibody

Catalog Number: 21376-1-AP

3 Publications



Basic Information

Catalog Number:

21376-1-AP

Size:

150ul, Concentration: 500 ug/ml by Nanodrop;

Source:

Rabbit

Isotype:

IgG

Immunogen Catalog Number:

AG15913

GenBank Accession Number:

BC107493

GeneID (NCBI):

1842

UNIPROT ID:

O94769

Full Name:

extracellular matrix protein 2, female organ and adipocyte specific

Calculated MW:

699 aa, 80 kDa

Purification Method:

Antigen affinity purification

Recommended Dilutions:

IHC 1:50-1:500

IF/ICC 1:20-1:200

Applications

Tested Applications:

IHC, IF/ICC, ELISA

Cited Applications:

WB, IHC

Species Specificity:

human, mouse, rat

Cited Species:

human, mouse

Note-IHC: suggested antigen retrieval with TE buffer pH 9.0; (*) Alternatively, antigen retrieval may be performed with citrate buffer pH 6.0

Positive Controls:

IHC : mouse cerebellum tissue, human ovary tissue

IF/ICC : LO2 cells,

Notable Publications

Author	Pubmed ID	Journal	Application
Meng Xia	27606318	Mol Neuropsychiatry	WB
Tong Xu	39611821	Microbiol Spectr	WB
Xingbo Cheng	36997057	Int J Biochem Cell Biol	IHC

Storage

Storage:

Store at -20°C. Stable for one year after shipment.

Storage Buffer:

PBS with 0.02% sodium azide and 50% glycerol pH 7.3.

Aliquoting is unnecessary for -20°C storage

*** 20ul sizes contain 0.1% BSA

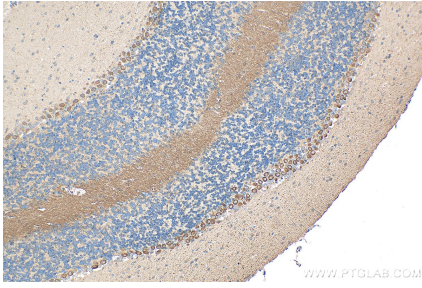
For technical support and original validation data for this product please contact:

T: 1 (888) 4PTGLAB (1-888-478-4522) (toll free in USA), or 1(312) 455-8498 (outside USA)

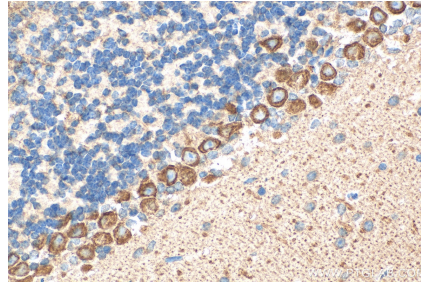
E: proteintech@ptglab.com
W: ptglab.com

This product is exclusively available under Proteintech Group brand and is not available to purchase from any other manufacturer.

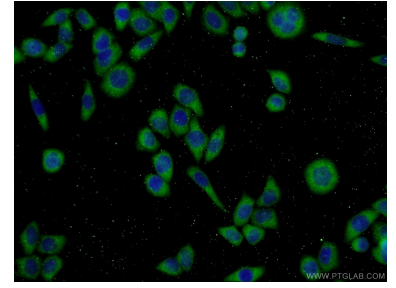
Selected Validation Data



Immunohistochemical analysis of paraffin-embedded mouse cerebellum tissue slide using 21376-1-AP (ECM2 antibody) at dilution of 1:200 (under 10x lens). Heat mediated antigen retrieval with Tris-EDTA buffer (pH 9.0).



Immunohistochemical analysis of paraffin-embedded mouse cerebellum tissue slide using 21376-1-AP (ECM2 antibody) at dilution of 1:200 (under 40x lens). Heat mediated antigen retrieval with Tris-EDTA buffer (pH 9.0).



Immunofluorescent analysis of L02 cells using 21376-1-AP (ECM2 antibody) at dilution of 1:50 and Alexa Fluor 488-conjugated Goat Anti-Rabbit IgG(H+L).