

For Research Use Only

CCDC153 Polyclonal antibody

Catalog Number: 21390-1-AP



Basic Information

Catalog Number: 21390-1-AP	GenBank Accession Number: BC101443	Purification Method: Antigen affinity purification
Size: 150ul , Concentration: 1400 ug/ml by Nanodrop and 767 ug/ml by Bradford method using BSA as the standard;	GeneID (NCBI): 283152	Recommended Dilutions: WB 1:500-1:2000
Source: Rabbit	UNIPROT ID: Q494R4	IHC 1:20-1:200
Isotype: IgG	Full Name: coiled-coil domain containing 153	IF/ICC 1:10-1:100
Immunogen Catalog Number: AG16044	Calculated MW: 210 aa, 24 kDa	
	Observed MW: 45-48 kDa	

Applications

Tested Applications:
WB, IHC, IF/ICC, ELISA

Species Specificity:
human, mouse, rat

Note-IHC: suggested antigen retrieval with TE buffer pH 9.0; (*) Alternatively, antigen retrieval may be performed with citrate buffer pH 6.0

Positive Controls:

WB : COLO 320 cells, HepG2 cells, L02 cells, human brain tissue, HeLa cells

IHC : human prostate hyperplasia tissue,

IF/ICC : HepG2 cells, HeLa cells

Background Information

CCDC153's properties have yet to be elucidated. However, research suggests that it may be a neuronal subtype marker (PMID: 28166221). It has a molecular weight of 24 KDa and is often observed on a Western blot as a dimer.

Storage

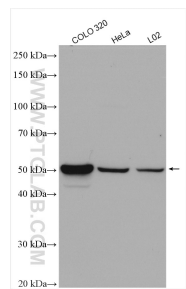
Storage:
Store at -20°C. Stable for one year after shipment.
Storage Buffer:
PBS with 0.02% sodium azide and 50% glycerol pH 7.3.
Aliquoting is unnecessary for -20°C storage

*** 20ul sizes contain 0.1% BSA

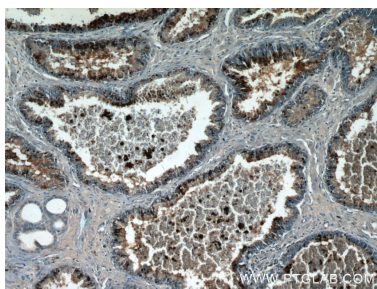
For technical support and original validation data for this product please contact:
T: 1 (888) 4PTGLAB (1-888-478-4522) (toll free in USA), or 1(312) 455-8498 (outside USA)
E: proteintech@ptglab.com
W: ptglab.com

This product is exclusively available under Proteintech Group brand and is not available to purchase from any other manufacturer.

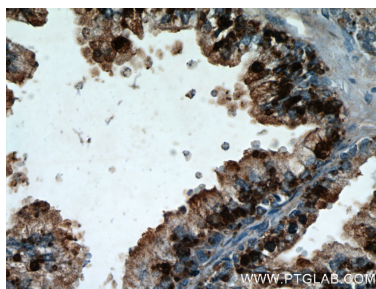
Selected Validation Data



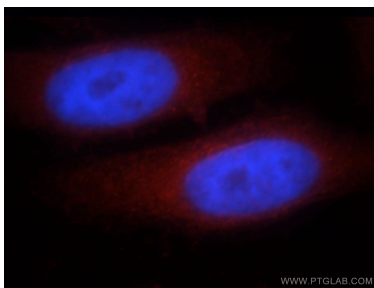
Various lysates were subjected to SDS PAGE followed by western blot with 21390-1-AP (CCDC153 antibody) at dilution of 1:1000 incubated at room temperature for 1.5 hours.



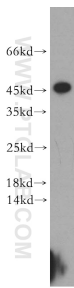
Immunohistochemical analysis of paraffin-embedded human prostate hyperplasia using 21390-1-AP (CCDC153 antibody) at dilution of 1:50 (under 10x lens).



Immunohistochemical analysis of paraffin-embedded human prostate hyperplasia using 21390-1-AP (CCDC153 antibody) at dilution of 1:50 (under 40x lens).



Immunofluorescent analysis of HepG2 cells, using CCDC153 antibody 21390-1-AP at 1:25 dilution and Rhodamine-labeled goat anti-rabbit IgG (red). Blue pseudocolor = DAPI (fluorescent DNA dye).



COLO 320 cells were subjected to SDS PAGE followed by western blot with 21390-1-AP (CCDC153 antibody) at dilution of 1:300 incubated at room temperature for 1.5 hours.