

For Research Use Only

RNF168 Polyclonal antibody

Catalog Number: 21393-1-AP

Featured Product

12 Publications



Basic Information

Catalog Number:

21393-1-AP

Size:

150ul, Concentration: 900 ug/ml by Nanodrop and 493 ug/ml by Bradford method using BSA as the standard;

Source:

Rabbit

Isotype:

IgG

Immunogen Catalog Number:

AG16055

GenBank Accession Number:

BC033791

GeneID (NCBI):

165918

UNIPROT ID:

Q8IYW5

Full Name:

ring finger protein 168

Calculated MW:

571 aa, 65 kDa

Observed MW:

65-70 kDa

Purification Method:

Antigen affinity purification

Recommended Dilutions:

WB 1:1000-1:4000

IP 0.5-4.0 ug for 1.0-3.0 mg of total protein lysate

IF/ICC 1:400-1:1600

Applications

Tested Applications:

WB, IF/ICC, IP, ELISA

Cited Applications:

WB, IF, IP, ColP

Species Specificity:

human

Cited Species:

human

Positive Controls:

WB : HepG2 cells, HeLa cells, human brain tissue, Jurkat cells, Transfected HEK-293 cells

IP : HepG2 cells,

IF/ICC : HepG2 cells,

Notable Publications

| Author | Pubmed ID | Journal | Application |
|---------------|-----------|------------|-------------|
| Bing Deng | 31486214 | EMBO Rep | WB |
| Fu-Cheng Wang | 36331508 | J Med Chem | WB, IP |
| Xiaopeng Lu | 33710666 | FASEB J | WB |

Storage

Storage:

Store at -20°C. Stable for one year after shipment.

Storage Buffer:

PBS with 0.02% sodium azide and 50% glycerol pH 7.3.

Aliquoting is unnecessary for -20°C storage

*** 20ul sizes contain 0.1% BSA

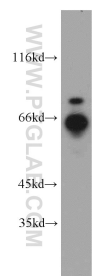
For technical support and original validation data for this product please contact:

T: 1 (888) 4PTGLAB (1-888-478-4522) (toll free in USA), or 1(312) 455-8498 (outside USA)

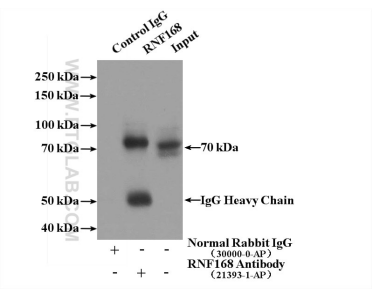
E: proteintech@ptglab.com
W: ptglab.com

This product is exclusively available under Proteintech Group brand and is not available to purchase from any other manufacturer.

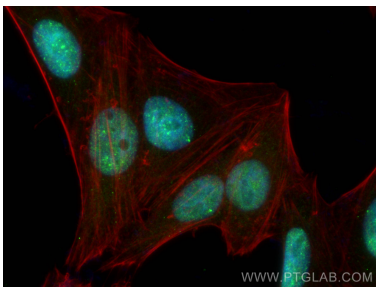
Selected Validation Data



HepG2 cells were subjected to SDS PAGE followed by western blot with 21393-1-AP (RNF 168 antibody) at dilution of 1:500 incubated at room temperature for 1.5 hours.



IP result of anti-RNF168 (IP:21393-1-AP, 4ug; Detection:21393-1-AP 1:500) with HepG2 cells lysate 2400ug.



Immunofluorescent analysis of (4% PFA) fixed HepG2 cells using RNF 168 antibody (21393-1-AP) at dilution of 1:800 and CoraLite@488-Conjugated Goat Anti-Rabbit IgG(H+L), CL594-Phalloidin (red).