

For Research Use Only

RLBP1L2 Polyclonal antibody

Catalog Number: 21394-1-AP



Basic Information

Catalog Number:

21394-1-AP

Size:

150ul , Concentration: 600 ug/ml by Nanodrop and 367 ug/ml by Bradford method using BSA as the standard;

Source:

Rabbit

Isotype:

IgG

Immunogen Catalog Number:

AG16061

GenBank Accession Number:

BC101376

GeneID (NCBI):

134829

UNIPROT ID:

Q5SYC1

Full Name:

retinaldehyde binding protein 1-like 2

Calculated MW:

327 aa, 38 kDa

Observed MW:

38 kDa

Purification Method:

Antigen affinity purification

Recommended Dilutions:

WB 1:500-1:3000

Applications

Tested Applications:

WB, ELISA

Species Specificity:

human, mouse, rat

Positive Controls:

WB : mouse brain tissue, human brain tissue, Jurkat cells, L02 cells

Storage

Storage:

Store at -20°C. Stable for one year after shipment.

Storage Buffer:

PBS with 0.02% sodium azide and 50% glycerol pH 7.3.

Aliquoting is unnecessary for -20°C storage

*** 20ul sizes contain 0.1% BSA

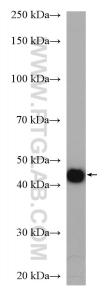
For technical support and original validation data for this product please contact:

T: 1 (888) 4PTGLAB (1-888-478-4522) (toll free in USA), or 1(312) 455-8498 (outside USA)

E: proteintech@ptglab.com
W: ptglab.com

This product is exclusively available under Proteintech Group brand and is not available to purchase from any other manufacturer.

Selected Validation Data



mouse brain tissue were subjected to SDS PAGE followed by western blot with 21394-1-AP (RLBP1L2 antibody) at dilution of 1:1500 incubated at room temperature for 1.5 hours.