

For Research Use Only

SR140 Polyclonal antibody

Catalog Number: 21399-1-AP



Basic Information

Catalog Number: 21399-1-AP	GenBank Accession Number: BC111692	Purification Method: Antigen affinity purification
Size: 150ul , Concentration: 900 µg/ml by Nanodrop and 440 µg/ml by Bradford method using BSA as the standard;	GeneID (NCBI): 23350	Recommended Dilutions: WB 1:1000-1:4000 IHC 1:20-1:200 IF 1:10-1:100
Source: Rabbit	Full Name: U2-associated SR140 protein	
Isotype: IgG	Calculated MW: 1029 aa, 118 kDa	
Immunogen Catalog Number: AG16093	Observed MW: 120-140 kDa	

Applications

Tested Applications: IF, IHC, WB, ELISA	Positive Controls:
Species Specificity: human, mouse, rat	WB: mouse heart tissue, HeLa cells, human brain tissue, L02 cells
Note-IHC: suggested antigen retrieval with TE buffer pH 9.0; (*) Alternatively, antigen retrieval may be performed with citrate buffer pH 6.0	IHC: human breast cancer tissue,
	IF: HEK-293 cells, Hela cells, HepG2 cells

Background Information

Storage

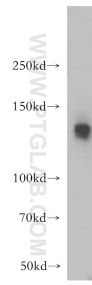
Storage:
Store at -20°C. Stable for one year after shipment.
Storage Buffer:
PBS with 0.02% sodium azide and 50% glycerol pH 7.3.
Aliquoting is unnecessary for -20°C storage

*** 20ul sizes contain 0.1% BSA

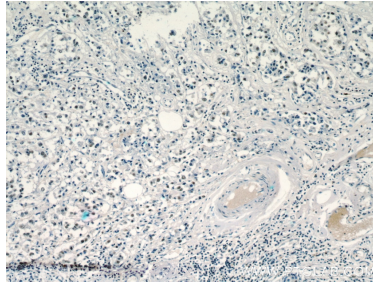
For technical support and original validation data for this product please contact:
T: 1 (888) 4PTGLAB (1-888-478-4522) (toll free in USA), or 1(312) 455-8498 (outside USA) E: proteintech@ptglab.com
W: ptglab.com

This product is exclusively available under Proteintech Group brand and is not available to purchase from any other manufacturer.

Selected Validation Data



mouse heart tissue were subjected to SDS PAGE followed by western blot with 21399-1-AP (SR140 antibody) at dilution of 1:500 incubated at room temperature for 1.5 hours.



Immunohistochemical analysis of paraffin-embedded human breast cancer using 21399-1-AP (SR140 antibody) at dilution of 1:100 (under 10x lens).



Immunofluorescent analysis of 293 cells, using SR140 antibody 21399-1-AP at 1:25 dilution and Rhodamine-labeled goat anti-rabbit IgG (red).