

For Research Use Only

SPATA13 Polyclonal antibody

Catalog Number: 21400-1-AP



Basic Information

Catalog Number:

21400-1-AP

Size:

150ul , Concentration: 900 ug/ml by Nanodrop and 280 ug/ml by Bradford method using BSA as the standard;

Source:

Rabbit

Isotype:

IgG

Immunogen Catalog Number:

AG16101

GenBank Accession Number:

BC109291

GeneID (NCBI):

221178

UNIPROT ID:

Q96N96

Full Name:

spermatogenesis associated 13

Calculated MW:

652 aa, 75 kDa

Observed MW:

75 kDa

Purification Method:

Antigen affinity purification

Recommended Dilutions:

WB 1:200-1:1000

IF/ICC 1:10-1:100

Applications

Tested Applications:

WB, IF/ICC, ELISA

Species Specificity:

human, mouse, rat

Positive Controls:

WB : COLO 320 cells, human placenta tissue

IF/ICC : HepG2 cells, HEK-293 cells, Hela cells

Storage

Storage:

Store at -20°C. Stable for one year after shipment.

Storage Buffer:

PBS with 0.02% sodium azide and 50% glycerol pH 7.3.

Aliquoting is unnecessary for -20°C storage

*** 20ul sizes contain 0.1% BSA

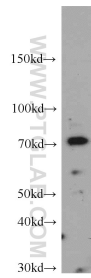
For technical support and original validation data for this product please contact:

T: 1 (888) 4PTGLAB (1-888-478-4522) (toll free in USA), or 1(312) 455-8498 (outside USA)

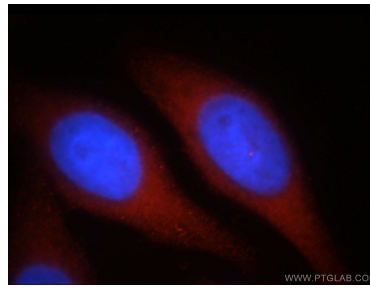
E: proteintech@ptglab.com
W: ptglab.com

This product is exclusively available under Proteintech Group brand and is not available to purchase from any other manufacturer.

Selected Validation Data



COLO 320 cells were subjected to SDS PAGE followed by western blot with 21400-1-AP (SPATA13 antibody) at dilution of 1:300 incubated at room temperature for 1.5 hours.



Immunofluorescent analysis of HepG2 cells, using SPATA13 antibody 21400-1-AP at 1:25 dilution and Rhodamine-labeled goat anti-rabbit IgG (red). Blue pseudocolor = DAPI (fluorescent DNA dye).