

For Research Use Only

PAK1 Polyclonal antibody

Catalog Number: 21401-1-AP

Featured Product

23 Publications



Basic Information

Catalog Number:

21401-1-AP

Size:

150ul, Concentration: 1200 ug/ml by Nanodrop and 673 ug/ml by Bradford method using BSA as the standard;

Source:

Rabbit

Isotype:

IgG

Immunogen Catalog Number:

AG16102

GenBank Accession Number:

BC109299

GeneID (NCBI):

5058

UNIPROT ID:

Q13153

Full Name:

p21 protein (Cdc42/Rac)-activated kinase 1

Calculated MW:

553 aa, 62 kDa

Observed MW:

61-65 kDa

Purification Method:

Antigen affinity purification

Recommended Dilutions:

WB 1:1000-1:6000

IP 0.5-4.0 ug for 1.0-3.0 mg of total protein lysate

IHC 1:50-1:500

IF/ICC 1:200-1:800

Applications

Tested Applications:

WB, IHC, IF/ICC, IP, ELISA

Cited Applications:

WB, IHC, IF, IP, CoIP

Species Specificity:

human, mouse, rat

Cited Species:

human, mouse, rat, chicken

Note-IHC: suggested antigen retrieval with TE buffer pH 9.0; (*) Alternatively, antigen retrieval may be performed with citrate buffer pH 6.0

Positive Controls:

WB: C6 cells, Jurkat cells, NIH/3T3 cells, MCF-7 cells, HeLa cells, K-562 cells

IP: K-562 cells,

IHC: mouse brain tissue, human breast cancer tissue

IF/ICC: C6 cells,

Background Information

The p21-Activated kinase 1 (PAK1), a member of serine-threonine kinases family, was initially identified as an interactor of the Rho GTPases RAC1 and CDC42, which affect a wide range of processes associated with cell motility, survival, metabolism, cell cycle, proliferation, transformation, stress, inflammation, and gene expression (PMID: 32863957). PAK1 is over-expressed in various malignancies such as ovarian, breast, lung, and bladder cancers, and is closely associated with tumor invasion.

Notable Publications

Author	Pubmed ID	Journal	Application
Yu-Yuan Zhang	36259516	J Biol Chem	WB
Dongmei Wang	36224320	Mol Neurobiol	IF
Pei Xia	30442385	Gynecol Oncol	WB

Storage

Storage:

Store at -20°C. Stable for one year after shipment.

Storage Buffer:

PBS with 0.02% sodium azide and 50% glycerol pH 7.3.

Aliquoting is unnecessary for -20°C storage

*** 20ul sizes contain 0.1% BSA

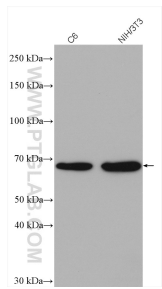
For technical support and original validation data for this product please contact:

T: 1 (888) 4PTGLAB (1-888-478-4522) (toll free in USA), or 1(312) 455-8498 (outside USA)

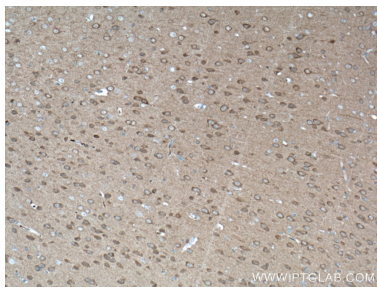
E: proteintech@ptglab.com
W: ptglab.com

This product is exclusively available under Proteintech Group brand and is not available to purchase from any other manufacturer.

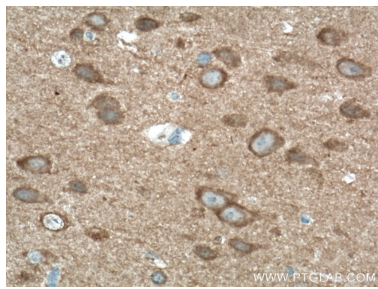
Selected Validation Data



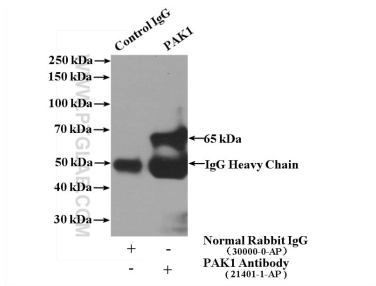
Various lysates were subjected to SDS PAGE followed by western blot with 21401-1-AP (PAK1 antibody) at dilution of 1:3000 incubated at room temperature for 1.5 hours.



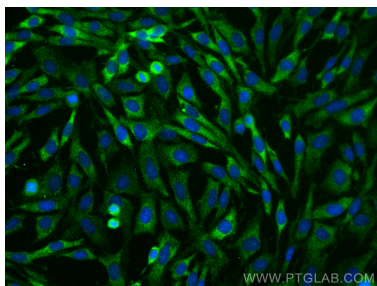
Immunohistochemical analysis of paraffin-embedded mouse brain tissue slide using 21401-1-AP (PAK1 antibody) at dilution of 1:200 (under 10x lens). Heat mediated antigen retrieval with Tris-EDTA buffer (pH 9.0).



Immunohistochemical analysis of paraffin-embedded mouse brain tissue slide using 21401-1-AP (PAK1 antibody) at dilution of 1:200 (under 40x lens). Heat mediated antigen retrieval with Tris-EDTA buffer (pH 9.0).



IP result of anti-PAK1 (IP:21401-1-AP, 4ug; Detection:21401-1-AP 1:1000) with K-562 cells lysate 3200ug.



Immunofluorescent analysis of (-20°C Ethanol) fixed C6 cells using PAK1 antibody (21401-1-AP) at dilution of 1:400 and CoraLite®488-Conjugated Goat Anti-Rabbit IgG(H+L).