

SMMHC Polyclonal antibody

Catalog Number: 21404-1-AP

37 Publications

Basic Information

| | | |
|--|--|---|
| Catalog Number: 21404-1-AP | GenBank Accession Number: BC104906 | Purification Method: Antigen affinity purification |
| Size: 150ul, Concentration: 700 µg/ml by Nanodrop; | GeneID (NCBI): 4629 | Recommended Dilutions: WB 1:1000-1:4000 IHC 1:1000-1:4000 IF 1:50-1:500 |
| Source: Rabbit | Full Name: myosin, heavy chain 11, smooth muscle | |
| Isotype: IgG | Calculated MW: 1979 aa, 228 kDa | |
| Immunogen Catalog Number: AG16114 | Observed MW: 200 kDa | |

Applications

Tested Applications:
FC, IF, IHC, WB, ELISA

Cited Applications:
IF, IHC, WB

Species Specificity:
human, mouse, rat

Cited Species:
human, rat, mouse

Note-IHC: suggested antigen retrieval with TE buffer pH 9.0; (*) Alternatively, antigen retrieval may be performed with citrate buffer pH 6.0

Positive Controls:

WB : mouse uterus tissue,

IHC : human colon tissue, rat eye tissue, mouse eye tissue, rat bladder tissue, human skeletal muscle tissue

IF : mouse heart tissue,

Background Information

SMMHC (smooth muscle myosin heavy chain; MYH11) is a contractile protein of smooth muscle cells. It is specifically expressed in cells derived from smooth muscle lineages. SMMHC is used as vascular smooth muscle cell (vSMC) contractile marker. It is also an excellent marker for myoepithelial cells, with no or few cross-reaction with myofibroblasts, thus very useful in the evaluation of stromal invasion.

Notable Publications

| Author | Pubmed ID | Journal | Application |
|--------------|-----------|----------------------------|-------------|
| Jinghan Lin | 36155059 | Biochem Biophys Res Commun | WB |
| Ziqing Li | 32886850 | Acta Physiol (Oxf) | WB |
| Yuan Yuan Li | 34732321 | Immunol Lett | WB, IF |

Storage

Storage:

Store at -20°C. Stable for one year after shipment.

Storage Buffer:

PBS with 0.02% sodium azide and 50% glycerol pH 7.3.

Aliquoting is unnecessary for -20°C storage

*** 20ul sizes contain 0.1% BSA

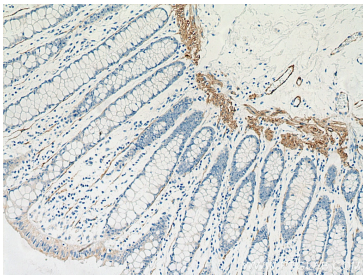
For technical support and original validation data for this product please contact:

T: 1 (888) 4PTGLAB (1-888-478-4522) (toll free in USA), or 1(312) 455-8498 (outside USA)

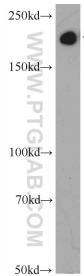
E: proteintech@ptglab.com
W: ptglab.com

This product is exclusively available under Proteintech Group brand and is not available to purchase from any other manufacturer.

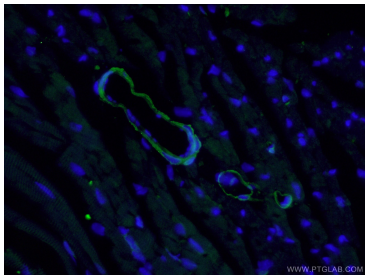
Selected Validation Data



Immunohistochemical analysis of paraffin-embedded human colon tissue slide using 21404-1-AP (SMMHC antibody) at dilution of 1:2000 (under 10x lens). Heat mediated antigen retrieval with Tris-EDTA buffer (pH 9.0).



mouse uterus tissue were subjected to SDS PAGE followed by western blot with 21404-1-AP (SMMHC antibody at dilution of 1:2000 incubated at room temperature for 1.5 hours.



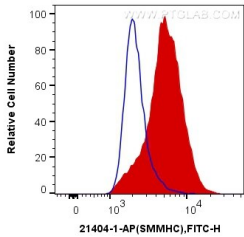
Immunofluorescent analysis of (4% PFA) fixed mouse heart tissue using 21404-1-AP (SMMHC antibody) at dilution of 1:50 and Alexa Fluor 488-conjugated AffiniPure Goat Anti-Rabbit IgG(H+L).



Immunohistochemical analysis of paraffin-embedded rat eye tissue slide using 21404-1-AP (SMMHC antibody) at dilution of 1:2000 (under 40x lens). Heat mediated antigen retrieval with Tris-EDTA buffer (pH 9.0).



Immunohistochemical analysis of paraffin-embedded mouse eye tissue slide using 21404-1-AP (SMMHC antibody) at dilution of 1:2000 (under 40x lens). Heat mediated antigen retrieval with Tris-EDTA buffer (pH 9.0).



1X10⁶ C2C12 cells were intracellularly stained with 0.4 ug Anti-Human SMMHC (21404-1-AP) and CoraLite®488-Conjugated AffiniPure Goat Anti-Rabbit IgG(H+L) at dilution 1:1000 (red), or 0.4 ug Control Antibody. Cells were fixed with 4% PFA and permeabilized with Flow Cytometry Perm Buffer (PF00011-C).