

For Research Use Only

# CNFN Polyclonal antibody, PBS Only

Catalog Number: 21425-1-PBS



## Basic Information

Catalog Number:

21425-1-PBS

Size:

100ug, Concentration: 1 mg/ml by  
Nanodrop;

Source:

Rabbit

Isotype:

IgG

Immunogen Catalog Number:

AG16012

GenBank Accession Number:

BC101197

GeneID (NCBI):

84518

UNIPROT ID:

Q9BYD5

Full Name:

cornifelin

Calculated MW:

112 aa, 12 kDa

Observed MW:

12 kDa

Purification Method:

Antigen affinity purification

## Applications

Tested Applications:

IP, Indirect ELISA

Species Specificity:

human, mouse

## Background Information

CNFN (cornifelin, also termed PLAC8L2) is highly expressed in the esophagus and skin, and is located on chromosome 19q13.2 (PMID: 30816522).

## Storage

Storage:

Store at -80°C.

Storage Buffer:

PBS only, pH7.3

For technical support and original validation data for this product please contact:

T: 1 (888) 4PTGLAB (1-888-478-4522) (toll free  
in USA), or 1(312) 455-8498 (outside USA)

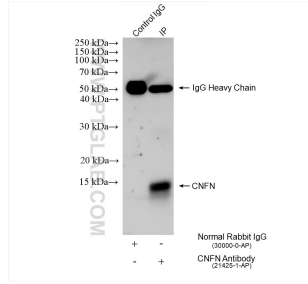
E: [proteintech@ptglab.com](mailto:proteintech@ptglab.com)  
W: [ptglab.com](http://ptglab.com)

This product is exclusively available under Proteintech Group brand and is not available to purchase from any other manufacturer.

## Selected Validation Data



IP result of anti-CNFN (IP:21425-1-AP, 4ug;  
Detection:21425-1-AP 1:500) with mouse skin  
tissue lysate 1120 ug. This data was developed  
using the same antibody clone with 21425-1-PBS in  
a different storage buffer formulation.



IP result of anti-CNFN (IP:21425-1-AP, 4ug;  
Detection:21425-1-AP 1:500) with HK-2 cells lysate  
1000 ug. This data was developed using the same  
antibody clone with 21425-1-PBS in a different  
storage buffer formulation.