

For Research Use Only

TBCCD1 Polyclonal antibody

Catalog Number: 21429-1-AP



Basic Information

Catalog Number: 21429-1-AP	GenBank Accession Number: BC025748	Purification Method: Antigen Affinity purified
Size: 150ul , Concentration: 700 ug/ml by Nanodrop;	GeneID (NCBI): 55171	Recommended Dilutions: WB: 1:500-1:3000 IF/ICC: 1:200-1:800
Source: Rabbit	UNIPROT ID: Q9NVR7	
Isotype: IgG	Full Name: TBCC domain containing 1	
Immunogen Catalog Number: AG16032	Calculated MW: 557 aa, 64 kDa	
	Observed MW: 52 kDa	

Applications

Tested Applications: WB, IF/ICC, ELISA	Positive Controls: WB : HEK-293 cells, HeLa cells, human testis tissue IF/ICC : HEK-293 cells,
Species Specificity: human	

Background Information

TBCC-domain containing 1 (TBCCD1) belongs to the tubulin-binding cofactor C (TBCC) family, which is a new human pericentriolar matrix component (PMID: 24101722). TBCCD1 localizes at the centrosome and at the spindle midzone, midbody and basal bodies of primary and motile cilia. Knockdown of TBCCD1 in RPE-1 cells caused the dissociation of the centrosome from the nucleus and disorganization of the Golgi apparatus. TBCCD1 is a key regulator of centrosome positioning and consequently of internal cell organization (PMID: 20168327).

Storage

Storage:
Store at -20°C. Stable for one year after shipment.
Storage Buffer:
PBS with 0.02% sodium azide and 50% glycerol, pH7.3
Aliquoting is unnecessary for -20°C storage

*** 20ul sizes contain 0.1% BSA

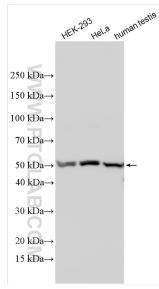
For technical support and original validation data for this product please contact:

T: 1 (888) 4PTGLAB (1-888-478-4522) (toll free in USA), or 1(312) 455-8498 (outside USA)

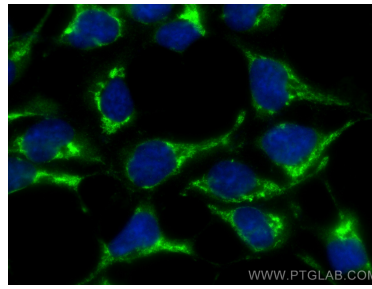
E: proteintech@ptglab.com
W: ptglab.com

This product is exclusively available under Proteintech Group brand and is not available to purchase from any other manufacturer.

Selected Validation Data



Various lysates were subjected to SDS PAGE followed by western blot with 21429-1-AP (TBCCD1 antibody) at dilution of 1:1500 incubated at room temperature for 1.5 hours.



Immunofluorescent analysis of (-20°C Ethanol) fixed HEK-293 cells using TBCCD1 antibody (21429-1-AP) at dilution of 1:400 and CoraLite®488-Conjugated Goat Anti-Rabbit IgG(H+L) (SA00013-2).