

For Research Use Only

TBCCD1 Polyclonal antibody, PBS Only

Catalog Number: 21429-1-PBS



Basic Information

Catalog Number:

21429-1-PBS

Size:

100ug, Concentration: 1 mg/ml by Nanodrop;

Source:

Rabbit

Isotype:

IgG

Immunogen Catalog Number:

AG16032

GenBank Accession Number:

BC025748

GeneID (NCBI):

55171

UNIPROT ID:

Q9NVR7

Full Name:

TBCC domain containing 1

Calculated MW:

557 aa, 64 kDa

Observed MW:

52 kDa

Purification Method:

Antigen Affinity purified

Applications

Tested Applications:

WB, IF/ICC, Indirect ELISA

Species Specificity:

human

Background Information

TBCC-domain containing 1 (TBCCD1) belongs to the tubulin-binding cofactor C (TBCC) family, which is a new human pericentriolar matrix component (PMID: 24101722). TBCCD1 localizes at the centrosome and at the spindle midzone, midbody and basal bodies of primary and motile cilia. Knockdown of TBCCD1 in RPE-1 cells caused the dissociation of the centrosome from the nucleus and disorganization of the Golgi apparatus. TBCCD1 is a key regulator of centrosome positioning and consequently of internal cell organization (PMID: 20168327).

Storage

Storage:

Store at -80°C.

Storage Buffer:

PBS only, pH7.3

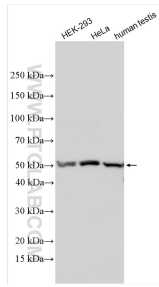
For technical support and original validation data for this product please contact:

T: 1 (888) 4PTGLAB (1-888-478-4522) (toll free in USA), or 1(312) 455-8498 (outside USA)

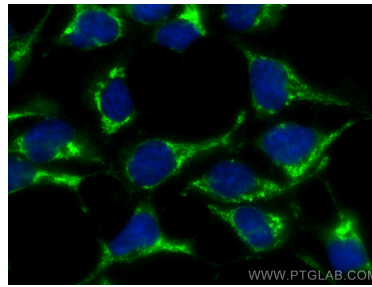
E: proteintech@ptglab.com
W: ptglab.com

This product is exclusively available under Proteintech Group brand and is not available to purchase from any other manufacturer.

Selected Validation Data



Various lysates were subjected to SDS PAGE followed by western blot with 21429-1-AP (TBCCD1 antibody) at dilution of 1:1500 incubated at room temperature for 1.5 hours. This data was developed using the same antibody clone with 21429-1-PBS in a different storage buffer formulation.



Immunofluorescent analysis of (-20°C Ethanol) fixed HEK-293 cells using TBCCD1 antibody (21429-1-AP) at dilution of 1:400 and CoraLite® 488-Conjugated Goat Anti-Rabbit IgG(H+L) (SA00013-2). This data was developed using the same antibody clone with 21429-1-PBS in a different storage buffer formulation.