

For Research Use Only

# SLC24A6 Polyclonal antibody

Catalog Number: 21430-1-AP

Featured Product

10 Publications



## Basic Information

### Catalog Number:

21430-1-AP

### Size:

150ul, Concentration: 800 ug/ml by Nanodrop;

### Source:

Rabbit

### Isotype:

IgG

### Immunogen Catalog Number:

AG16034

### GenBank Accession Number:

BC098360

### GeneID (NCBI):

80024

### UNIPROT ID:

Q6J4K2

### Full Name:

solute carrier family 24 (sodium/potassium/calcium exchanger), member 6

### Calculated MW:

584 aa, 64 kDa

### Observed MW:

64 kDa

### Purification Method:

Antigen affinity purification

### Recommended Dilutions:

WB 1:500-1:2000

IHC 1:50-1:500

## Applications

### Tested Applications:

WB, IHC, ELISA

### Cited Applications:

WB, IHC, IF

### Species Specificity:

human, mouse, rat

### Cited Species:

human, mouse, rat

### Positive Controls:

WB : mouse brain tissue, rat brain tissue

IHC : mouse brain tissue, mouse heart tissue

**Note-IHC: suggested antigen retrieval with TE buffer pH 9.0; (\*) Alternatively, antigen retrieval may be performed with citrate buffer pH 6.0**

## Background Information

SLC24A6, also named as NCLX, is a kind of mitochondrial sodium/calcium antiporter that mediates sodium-dependent calcium efflux from mitochondrion by mediating the exchange of 3 sodium ions per 1 calcium ion. It has been reported that SLC24A6 plays a key role in attenuating potential ROS production and injury upon cardiac reperfusion. SLC24A6 is associated with mitochondrial calcium homeostasis by mediating mitochondrial calcium extrusion. (PMID: 32728214, 20018762, 28219928)

## Notable Publications

Author	Pubmed ID	Journal	Application
Yuan Zu	26089852	J Geriatr Cardiol	WB, IF
Vidhya Tangeda	35296653	Cell Death Dis	IHC, IF
Xin-Yu Miao	35107747	Cell Biochem Biophys	WB, IF

## Storage

### Storage:

Store at -20°C. Stable for one year after shipment.

### Storage Buffer:

PBS with 0.02% sodium azide and 50% glycerol pH 7.3.

Aliquoting is unnecessary for -20°C storage

\*\*\* 20ul sizes contain 0.1% BSA

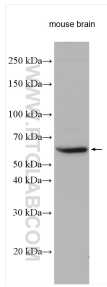
For technical support and original validation data for this product please contact:

T: 1 (888) 4PTGLAB (1-888-478-4522) (toll free in USA), or 1(312) 455-8498 (outside USA)

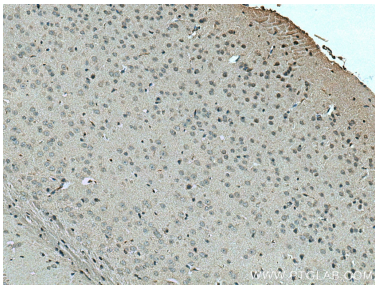
E: proteintech@ptglab.com  
W: ptglab.com

This product is exclusively available under Proteintech Group brand and is not available to purchase from any other manufacturer.

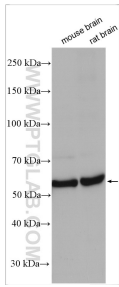
## Selected Validation Data



Mouse brain tissue were subjected to SDS PAGE followed by western blot with 21430-1-AP (SLC24A6 antibody) at dilution of 1:1000 incubated at room temperature for 1.5 hours.



Immunohistochemical analysis of paraffin-embedded mouse brain tissue slide using 21430-1-AP (SLC24A6 antibody) at dilution of 1:200 (under 10x lens). Heat mediated antigen retrieval with Tris-EDTA buffer (pH 9.0).



Various lysates were subjected to SDS PAGE followed by western blot with 21430-1-AP (SLC24A6 antibody) at dilution of 1:3000 incubated at room temperature for 1.5 hours.