

For Research Use Only

# CHIT1 Polyclonal antibody

Catalog Number: 21432-1-AP

1 Publications



## Basic Information

### Catalog Number:

21432-1-AP

### Size:

150ul, Concentration: 450 ug/ml by Nanodrop and 247 ug/ml by Bradford method using BSA as the standard;

### Source:

Rabbit

### Isotype:

IgG

### Immunogen Catalog Number:

AG16039

### GenBank Accession Number:

BC103695

### GeneID (NCBI):

1118

### UNIPROT ID:

Q13231

### Full Name:

chitinase 1 (chitotriosidase)

### Calculated MW:

466 aa, 52 kDa

### Observed MW:

55 kDa

### Purification Method:

Antigen affinity purification

### Recommended Dilutions:

IHC 1:50-1:500

## Applications

### Tested Applications:

IHC, ELISA

### Cited Applications:

IHC

### Species Specificity:

human

**Note-IHC: suggested antigen retrieval with TE buffer pH 9.0; (\*) Alternatively, antigen retrieval may be performed with citrate buffer pH 6.0**

### Positive Controls:

IHC : human pancreas tissue,

## Notable Publications

Author	Pubmed ID	Journal	Application
Saisai Tian	38721587	Comput Struct Biotechnol J	IHC

## Storage

### Storage:

Store at -20°C. Stable for one year after shipment.

### Storage Buffer:

PBS with 0.02% sodium azide and 50% glycerol pH 7.3.

Aliquoting is unnecessary for -20°C storage

\*\*\* 20ul sizes contain 0.1% BSA

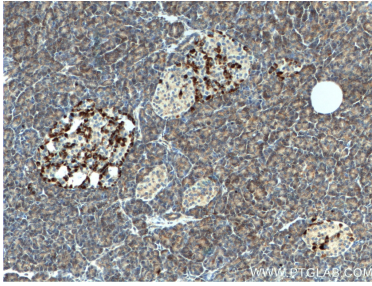
For technical support and original validation data for this product please contact:

T: 1 (888) 4PTGLAB (1-888-478-4522) (toll free in USA), or 1(312) 455-8498 (outside USA)

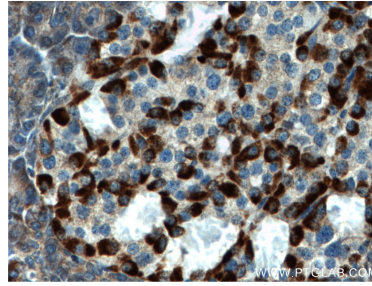
E: [proteintech@ptglab.com](mailto:proteintech@ptglab.com)  
W: [ptglab.com](http://ptglab.com)

This product is exclusively available under Proteintech Group brand and is not available to purchase from any other manufacturer.

## Selected Validation Data



Immunohistochemical analysis of paraffin-embedded human pancreas tissue slide using 21432-1-AP (CHIT1 antibody) at dilution of 1:200 (under 10x lens).



Immunohistochemical analysis of paraffin-embedded human pancreas tissue slide using 21432-1-AP (CHIT1 antibody) at dilution of 1:200 (under 40x lens).