

For Research Use Only

# SLC5A8 Polyclonal antibody

Catalog Number: 21433-1-AP

14 Publications



## Basic Information

### Catalog Number:

21433-1-AP

### Size:

150ul, Concentration: 500 ug/ml by Nanodrop;

### Source:

Rabbit

### Isotype:

IgG

### Immunogen Catalog Number:

AG16041

### GenBank Accession Number:

BC110492

### GeneID (NCBI):

160728

### UNIPROT ID:

Q8N695

### Full Name:

solute carrier family 5 (iodide transporter), member 8

### Calculated MW:

610 aa, 67 kDa

### Observed MW:

67 kDa

### Purification Method:

Antigen affinity purification

### Recommended Dilutions:

WB 1:500-1:1000

IHC 1:50-1:500

IF-P 1:50-1:500

IF/ICC 1:10-1:100

## Applications

### Tested Applications:

WB, IHC, IF/ICC, IF-P, ELISA

### Cited Applications:

WB, IHC, IF

### Species Specificity:

human, mouse, rat

### Cited Species:

human, mouse, rat, bovine

**Note-IHC: suggested antigen retrieval with TE buffer pH 9.0; (\*) Alternatively, antigen retrieval may be performed with citrate buffer pH 6.0**

### Positive Controls:

**WB**: HEK-293 cells, human brain tissue, mouse brain tissue, mouse kidney tissue, rat kidney tissue

**IHC**: rat kidney tissue, mouse kidney tissue

**IF-P**: mouse kidney tissue,

**IF/ICC**: Hela cells,

## Background Information

The sodium-coupled monocarboxylate transporter 1 (SMCT1; SLC5A8), belonging to the SLC5A family, is a 67-kDa protein that functions as a Na<sup>+</sup>-coupled electrogenic transporter for SCFAs. SLC5A mRNA and protein are expressed in healthy human, rat, and mouse colon. The protein is localized to the apical membrane of the colonocytes. Immunohistochemical studies revealed the selective localization of SMCT1 on the brush border in the villi of the terminal ileum and crypts of the colon in mice.

## Notable Publications

Author	Pubmed ID	Journal	Application
Laura Schaefer	35296712	Sci Rep	IHC
Jing Xiao	29497172	Exp Mol Med	WB
Chenxu Zhao	32850999	Front Vet Sci	WB,IHC,IF

## Storage

### Storage:

Store at -20°C. Stable for one year after shipment.

### Storage Buffer:

PBS with 0.02% sodium azide and 50% glycerol pH 7.3.

Aliquoting is unnecessary for -20°C storage

\*\*\* 20ul sizes contain 0.1% BSA

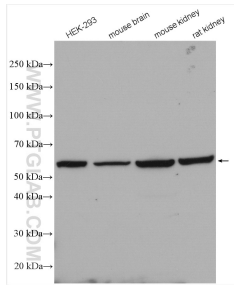
For technical support and original validation data for this product please contact:

T: 1 (888) 4PTGLAB (1-888-478-4522) (toll free in USA), or 1(312) 455-8498 (outside USA)

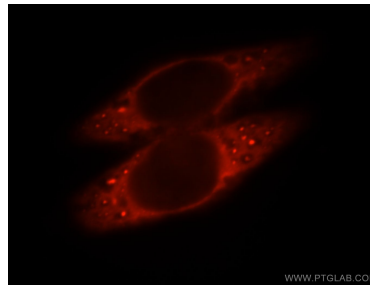
E: proteintech@ptglab.com  
W: ptglab.com

This product is exclusively available under Proteintech Group brand and is not available to purchase from any other manufacturer.

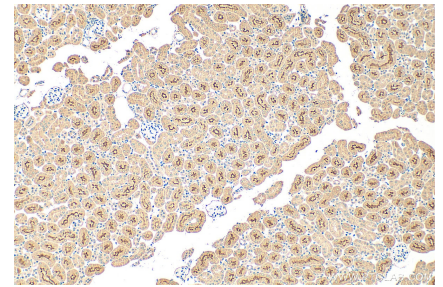
## Selected Validation Data



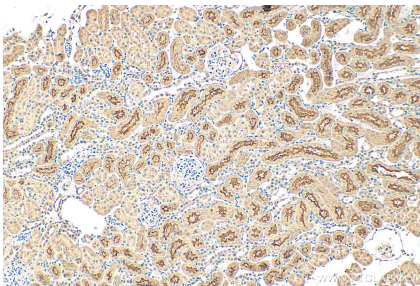
Various lysates were subjected to SDS PAGE followed by western blot with 21433-1-AP (SLC5A8 antibody) at dilution of 1:800 incubated at room temperature for 1.5 hours.



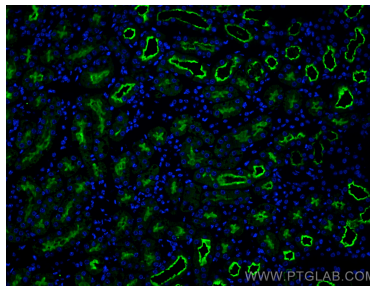
Immunofluorescent analysis of HeLa cells, using SLC5A8 antibody 21433-1-AP at 1:25 dilution and Rhodamine-labeled goat anti-rabbit IgG (red).



Immunohistochemical analysis of paraffin-embedded mouse kidney tissue slide using 21433-1-AP (SLC5A8 antibody) at dilution of 1:200 (under 10x lens). Heat mediated antigen retrieval with Tris-EDTA buffer (pH 9.0).



Immunohistochemical analysis of paraffin-embedded rat kidney tissue slide using 21433-1-AP (SLC5A8 antibody) at dilution of 1:200 (under 10x lens). Heat mediated antigen retrieval with Tris-EDTA buffer (pH 9.0).



Immunofluorescent analysis of (4% PFA) fixed paraffin-embedded mouse kidney tissue using SLC5A8 antibody (21433-1-AP) at dilution of 1:200 and CoraLite® 488-Conjugated Goat Anti-Rabbit IgG(H+L) (SA00013-2). Heat mediated antigen retrieval with Tris-EDTA buffer (pH 9.0).