

For Research Use Only

BAT2L Polyclonal antibody

Catalog Number: 21455-1-AP



Basic Information

Catalog Number:

21455-1-AP

Size:

150ul, Concentration: 300 ug/ml by Nanodrop and 207 ug/ml by Bradford method using BSA as the standard;

Source:

Rabbit

Isotype:

IgG

Immunogen Catalog Number:

AG14690

GenBank Accession Number:

BC002872

GeneID (NCBI):

84726

UNIPROT ID:

Q5JSZ5

Full Name:

HLA-B associated transcript 2-like

Calculated MW:

1535 aa, 166 kDa

Purification Method:

Antigen affinity purification

Recommended Dilutions:

IF/ICC 1:50-1:500

Applications

Tested Applications:

IF/ICC, ELISA

Species Specificity:

human

Positive Controls:

IF/ICC : HeLa cells,

Background Information

PRRC2B is a Novel m6A reader that is expressed and functional in cerebral endothelial cells.

Storage

Storage:

Store at -20°C. Stable for one year after shipment.

Storage Buffer:

PBS with 0.02% sodium azide and 50% glycerol pH 7.3.

Aliquoting is unnecessary for -20°C storage

*** 20ul sizes contain 0.1% BSA

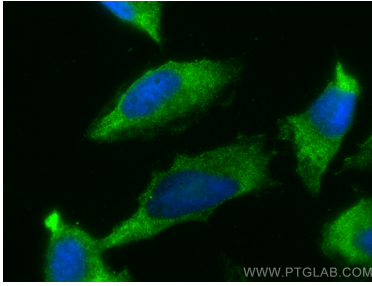
For technical support and original validation data for this product please contact:

T: 1 (888) 4PTGLAB (1-888-478-4522) (toll free in USA), or 1(312) 455-8498 (outside USA)

E: proteintech@ptglab.com
W: ptglab.com

This product is exclusively available under Proteintech Group brand and is not available to purchase from any other manufacturer.

Selected Validation Data



Immunofluorescent analysis of (-20°C Ethanol) fixed HeLa cells using BAT2L antibody (21455-1-AP) at dilution of 1:200 and CoraLite®488-Conjugated AffiniPure Goat Anti-Rabbit IgG(H+L).