

For Research Use Only

# C21orf59 Polyclonal antibody

Catalog Number: 21461-1-AP

1 Publications



## Basic Information

### Catalog Number:

21461-1-AP

### Size:

150ul , Concentration: 1000 ug/ml by Nanodrop and 413 ug/ml by Bradford method using BSA as the standard;

### Source:

Rabbit

### Isotype:

IgG

### Immunogen Catalog Number:

AG14994

### GenBank Accession Number:

BC000709

### GeneID (NCBI):

56683

### UNIPROT ID:

P57076

### Full Name:

chromosome 21 open reading frame 59

### Calculated MW:

290 aa, 33 kDa

### Observed MW:

33 kDa

### Purification Method:

Antigen affinity purification

### Recommended Dilutions:

WB 1:500-1:2000

IF/ICC 1:50-1:500

## Applications

### Tested Applications:

WB, IF/ICC, ELISA

### Cited Applications:

WB

### Species Specificity:

human

### Cited Species:

human

### Positive Controls:

WB : K-562 cells, HeLa cells, MCF-7 cells, PC-3 cells

IF/ICC : HEK-293 cells,

## Notable Publications

| Author    | Pubmed ID | Journal  | Application |
|-----------|-----------|----------|-------------|
| Min Huang | 37541219  | Mol Cell | WB          |

## Storage

### Storage:

Store at -20°C. Stable for one year after shipment.

### Storage Buffer:

PBS with 0.02% sodium azide and 50% glycerol pH 7.3.

Aliquoting is unnecessary for -20°C storage

\*\*\* 20ul sizes contain 0.1% BSA

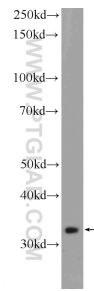
For technical support and original validation data for this product please contact:

T: 1 (888) 4PTGLAB (1-888-478-4522) (toll free in USA), or 1(312) 455-8498 (outside USA)

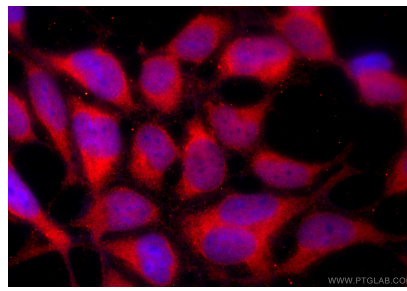
E: [proteintech@ptglab.com](mailto:proteintech@ptglab.com)  
W: [ptglab.com](http://ptglab.com)

This product is exclusively available under Proteintech Group brand and is not available to purchase from any other manufacturer.

## Selected Validation Data



K-562 cells were subjected to SDS PAGE followed by western blot with 21461-1-AP (C21orf59 Antibody) at dilution of 1:1000 incubated at room temperature for 1.5 hours.



Immunofluorescent analysis of (-20°C Ethanol) fixed HEK-293 cells using C21orf59 antibody (21461-1-AP) at dilution of 1:200 and CoraLite® 594-Conjugated Goat Anti-Rabbit IgG(H+L) (SA00013-4).