

For Research Use Only

# C21orf59 Polyclonal antibody, PBS Only

Catalog Number: 21461-1-PBS



## Basic Information

### Catalog Number:

21461-1-PBS

### Size:

100ug, Concentration: 1 mg/ml by Nanodrop;

### Source:

Rabbit

### Isotype:

IgG

### Immunogen Catalog Number:

AG14994

### GenBank Accession Number:

BC000709

### GeneID (NCBI):

56683

### UNIPROT ID:

P57076

### Full Name:

chromosome 21 open reading frame 59

### Calculated MW:

290 aa, 33 kDa

### Observed MW:

33 kDa

### Purification Method:

Antigen affinity purification

## Applications

### Tested Applications:

WB, IF/ICC, Indirect ELISA

### Species Specificity:

human

## Storage

### Storage:

Store at -80°C.

### Storage Buffer:

PBS Only

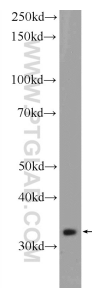
For technical support and original validation data for this product please contact:

T: 1 (888) 4PTGLAB (1-888-478-4522) (toll free in USA), or 1(312) 455-8498 (outside USA)

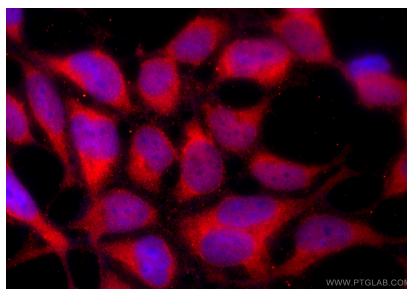
E: [proteintech@ptglab.com](mailto:proteintech@ptglab.com)  
W: [ptglab.com](http://ptglab.com)

This product is exclusively available under Proteintech Group brand and is not available to purchase from any other manufacturer.

## Selected Validation Data



K-562 cells were subjected to SDS PAGE followed by western blot with 21461-1-AP (C21orf59 Antibody) at dilution of 1:1000 incubated at room temperature for 1.5 hours. This data was developed using the same antibody clone with 21461-1-PBS in a different storage buffer formulation.



Immunofluorescent analysis of (-20°C Ethanol) fixed HEK-293 cells using C21orf59 antibody (21461-1-AP) at dilution of 1:200 and CoraLite® 594-Conjugated Goat Anti-Rabbit IgG(H+L) (SA00013-4). This data was developed using the same antibody clone with 21461-1-PBS in a different storage buffer formulation.