

For Research Use Only

# MMACHC Polyclonal antibody

Catalog Number: 21462-1-AP



## Basic Information

### Catalog Number:

21462-1-AP

### Size:

150ul, Concentration: 400 ug/ml by Nanodrop and 240 ug/ml by Bradford method using BSA as the standard;

### Source:

Rabbit

### Isotype:

IgG

### Immunogen Catalog Number:

AG15001

### GenBank Accession Number:

BC006122

### GeneID (NCBI):

25974

### UNIPROT ID:

Q9Y4U1

### Full Name:

methylmalonic aciduria (cobalamin deficiency) cblC type, with homocystinuria

### Calculated MW:

282 aa, 32 kDa

### Observed MW:

32 kDa

### Purification Method:

Antigen affinity purification

### Recommended Dilutions:

WB 1:500-1:1000

IHC 1:50-1:500

## Applications

### Tested Applications:

WB, IHC, ELISA

### Species Specificity:

human, mouse, rat

**Note-IHC: suggested antigen retrieval with TE buffer pH 9.0; (\*) Alternatively, antigen retrieval may be performed with citrate buffer pH 6.0**

### Positive Controls:

WB: Raji cells, HeLa cells

IHC: human liver tissue,

## Background Information

MMACHC, also named as CblC, is located on chromosome 1 and comprises four coding exons. Human MMACHC catalyzes the reductive decyanation of cyanocobalamin and may serve as a trafficking chaperone for intracellular cobalamin. It also catalyzes the glutathione-dependent reductive demethylation of methylcobalamin, and, with much lower efficiency, the glutathione-dependent reductive demethylation of adenosylcobalamin. MMACHC binds cyanocobalamin, adenosylcobalamin, methylcobalamin and other, related vitamin B12 derivatives.

## Storage

### Storage:

Store at -20°C. Stable for one year after shipment.

### Storage Buffer:

PBS with 0.02% sodium azide and 50% glycerol pH 7.3.

Aliquoting is unnecessary for -20°C storage

\*\*\* 20ul sizes contain 0.1% BSA

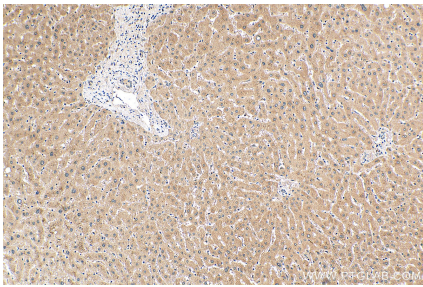
For technical support and original validation data for this product please contact:

T: 1 (888) 4PTGLAB (1-888-478-4522) (toll free in USA), or 1(312) 455-8498 (outside USA)

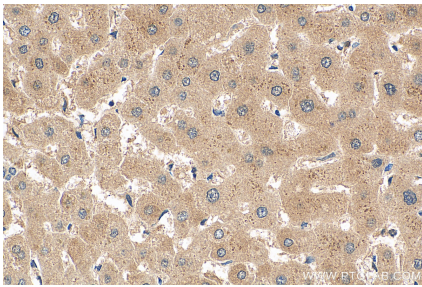
E: [proteintech@ptglab.com](mailto:proteintech@ptglab.com)  
W: [ptglab.com](http://ptglab.com)

This product is exclusively available under Proteintech Group brand and is not available to purchase from any other manufacturer.

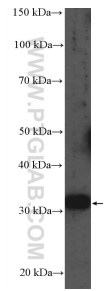
Selected Validation Data



Immunohistochemical analysis of paraffin-embedded human liver tissue slide using 21462-1-AP (MMACHC antibody) at dilution of 1:200 (under 10x lens). Heat mediated antigen retrieval with Tris-EDTA buffer (pH 9.0).



Immunohistochemical analysis of paraffin-embedded human liver tissue slide using 21462-1-AP (MMACHC antibody) at dilution of 1:200 (under 40x lens). Heat mediated antigen retrieval with Tris-EDTA buffer (pH 9.0).



Raji cells were subjected to SDS PAGE followed by western blot with 21462-1-AP (MMACHC Antibody) at dilution of 1:600 incubated at room temperature for 1.5 hours.